

WEATHER			
Today, Nov. 9	32	46	0.18
Friday, Nov. 10	31	40	0.00
Saturday, Nov. 11	27	31	0.00
Sunday, Nov. 12	27	31	0.00
Monday, Nov. 13	27	31	0.00
Tuesday, Nov. 14	27	31	0.00
Wednesday, Nov. 15	27	31	0.00
Thursday, Nov. 16	27	31	0.00
Friday, Nov. 17	27	31	0.00

The Chelsea Standard

QUOTE

Action may not always bring happiness; but there is no happiness without action.
—Disraeli

SEVENTH YEAR—No. 20

12 Pages This Week

CHELSEA, MICHIGAN, THURSDAY, NOVEMBER 17, 1960

10c per Copy

SUBSCRIPTION \$3.00 PER YEAR

Merchants Planning Special Christmas Season Activities

Santa Claus Visit Scheduled Friday, Nov. 26

Chelsea merchants are planning a "kick-off" for the Christmas shopping season the day after Thanksgiving when Santa Claus will make his first visit to Chelsea. The big parade, will meet Santa and escort him to the new parking lot where a public system will make it possible for him to greet all the children at once.

Santa Claus will have a special for every child. The affair will have the added attraction of music by the Chelsea School Band.

Santa Claus' arrival is scheduled for 12 o'clock noon. The highlights of the Christmas shopping season will be a series of pre-Christmas sales with merchant offering one special-value bargain item.

The first sale of the series will be Dec. 2 and 3; the second on Dec. 9 and 10; and the third on Dec. 16 and 17. The Chelsea Chamber of Commerce will again sponsor a residential lighting contest; the Santa Claus mail box to receive children's letters to Santa Claus with the necessity of paying postage in place in front of the office stores will remain open hours as Christmas nears; in general, the holiday spirit coming evident throughout the community.

Just 37 days until Christmas.

Eagle Scout Award Given Victor Parks

Victor Parks, son of Mr. and Mrs. Vernon Parks, received Boy Scout's highest award at a Court of Honor held Monday evening in the dining room of the Congregational church.

The presentation was made by Ted Wilson, himself an Eagle Scout, and given to the new Eagle Scout by his mother. The certificate signifying the high award was presented to him by his father and immediately after this Victor's young brother, Bruce, saluted him. Young Bruce, a Cub Scout, is just starting along the upward road in Scouting.

The Court of Honor program was preceded by a pot-luck dinner planned under the direction of Mrs. Vernon Parks and Mrs. Robert Foye. Approximately 125 Scouts and parents were present.

A. S. Penhalligon acted as master of ceremonies and introduced special guests as follows: Hartley Pierson, representative of Portage Trails Boy Scout Council; Douglas Lange, Neighborhood Commissioner; Elmer Kiel, representing Troop 76; Donald Baldwin, representing the Kiwanis Club of Chelsea; the Boy Scouts sponsor; and Arthur Schumuk, elementary school principal, representing Chelsea schools.

Representing the churches of the community were the Rev. Fr. Leo (Continued on page five)



ALL THAT WAS LEFT of two big barns at the Jack Bradbury farm on Easton Rd., after fire of undetermined origin swept the buildings and contents Wednesday morning. Heroic efforts of firemen from Dexter and Chelsea, assisted by road

Fire Destroys Two Barns On Jack Bradbury Farm

Two large barns and large quantities of hay, straw and grain were destroyed in a spectacular fire which was discovered at about 10 a.m. yesterday on the Jack Bradbury farm, 9400 Easton Rd. However, team work of the Chelsea and Dexter fire departments, together with the assistance of road crews working on the nearby Interstate 94 construction, and the help of neighboring farmers who hauled truck loads of water in milk cans, kept the blaze confined to the two barns and saved a third large barn located only three feet away.

Spectators were amazed that the fire fighters and volunteers were

successful in their efforts to save not only the nearby barn, but the other buildings, including a tool shed and milk house.

The larger of the two barns, both of which were in excellent condition, was about 100 years old. The other had been remodeled within the past two years. The fire, of unknown origin, started in the latter building.

According to Chelsea Fire Department records, the fire loss includes 1,000 bushels of oats, 100 bushels of wheat, 300 tons of hay, 500 bales of straw, and several pieces of farm equipment.

Invaluable assistance was rendered by workers of the Sargent Construction Co. of Saginaw and the Holloway Construction Co. of Livonia working nearby when the fire started.

Trucks of the Sargent Construction company hauled approximately 20,000 gallons of water and the Holloway crews brought two large bulldozers to scrape away the burning hay and debris from the destroyed buildings.

The Chelsea Fire Department hauled 6,000 gallons of water and the Dexter Fire Department had three trucks fighting the fire and hauling water.

Chelsea firemen remained on the scene until 5 p.m. and the road construction trucks left at approximately the same time.

The fortunate combination of

road equipment made available so freely, and the work of Chelsea and Dexter firemen and their equipment, together with the assistance of neighbors prevented the destruction of the remaining barns and buildings as well as the farmhouse.

Women in the neighborhood provided hot coffee and sandwiches for the men fighting the blaze and wives of Chelsea firemen brought hot coffee and doughnuts.

The Bradburys were unable to estimate the amount of their loss and expressed their admiration and appreciation for the work of those who were successful in saving the house and other buildings.

First Deer Kill Reported About 9:30

The first report of deer hunter success on the opening day of the 1961 season, Tuesday, Nov. 15, was that Paul Reule downed a big five-point buck at 9:30 a.m. just west of Chelsea on the Adolph Duerr farm on Cavanaugh Lake Rd. Reule's brother, Julius, was with him at the time.

Approximately 350 hunters secured deer hunting licenses at three Chelsea license agencies—Merkel Brothers whose count Tuesday morning was 200; Chelsea Hardware where 60 deer licenses had been purchased; and Gambles, who had sold 85.

Many hunters left for the north the first of the week while others are planning to leave later in the season.

Community Fair Board Elects New Officers

The Chelsea Community Fair Association, at a meeting held Wednesday evening, Nov. 10, at McKune Memorial Library, elected Charles Lancaster as president for 1961.

Other officers elected are Roland Spaulding, first vice-president; Ralph McCalla, second vice-president; Lloyd Grau, secretary; and H. T. Moore, treasurer.

This is Moore's sixth consecutive term as treasurer.

The new fair board is composed of three members from the Dexter area and three from the Chelsea area.

Members from Dexter are Ezra Lesser, Keith Bradbury and Harold Gross. Chelsea representatives are Joseph Rucker, Robert Kuschmaul and Calvin Clark.

It was reported at the meeting that the Merchants' building at the fairgrounds has been rented for winter boat storage.

Some space has also been rented for storage purposes in the livestock building.

In charge of rental of space in the livestock building is Everett Van Riper, who said additional space is still available.

Mr. and Mrs. Floyd Darby spent Sunday at Van Wert, O., where they visited the former's brother, Ross Darby, and called on Mrs. Ross Darby who is a patient at the Van Wert County Community hospital where she underwent surgery Oct. 28.

Your Presence Urged If You Want Toll-Free Dexter Phone Calls

Community Thanksgiving Service Set

The annual United Thanksgiving service sponsored by Protestant churches of Chelsea will be held Wednesday evening, Nov. 23, at the Methodist Home chapel. The service will begin at 8 p.m.

The Rev. James O. Sutton, Sr., pastor of the Chelsea Assembly of God church, will deliver the sermon. His topic will be "Thanksgiving for Inner Strength."

The Rev. Edwin J. Weiss, superintendent of the Methodist Home, will preside.

The Rev. Weiss announced that the offering received at the united service has been designated for Christian Rural Overseas Program (CROP).

Other Protestant clergymen will participate in the service, including the Rev. P. H. Grabowski, pastor emeritus of St. Paul's Evangelical and Reformed church, the Rev. S. D. Kinder, the Rev. Philip Rastan and the Rev. Allan Reed, pastors of the Methodist, Congregational and Episcopal churches, respectively.

The Rev. Paul M. Schenke, pastor of St. Paul's church, has other commitments that evening and cannot be present for the united service.

The Rev. Weiss has announced that parking will be available at the rear of the building and someone will be on duty there to direct drivers.

To reach the parking area, cars should use the driveway at the north end of the grounds, parallel with the railroad tracks.

A wide selection of children's books will be available.

Mrs. David Soule, who as special activities committee chairman for the library Board is in charge of the project, said any books they do not happen to have in the display may be ordered.

Volunteers from the Woman's Club and Child Study clubs will be assisting at the sale.

Football Dinner Tuesday Night Honors Grid Team

A football dinner, given each year by mothers of the current football team members since the club was organized 11 years ago, was held Tuesday night at the Chelsea High school cafeteria.

Mrs. Sweeney was an honor guest at the affair in recognition of her efforts as the originator of the annual event.

Following the dinner, Dave McLaughlin and Jim Maynard were introduced as the captains of the 1961 football team. Names of the co-captains remained a secret until the announcement was made at the dinner.

Also announced were the names of the four players chosen by the team for designation as follows: Senior Dan Ellenwood as most valuable lineman; Sophomore Don Wilson as most improved lineman; Junior Dave McLaughlin as most

Assembly of God Area Youth Plan All-Day Rally

Christ Ambassadors, an Assembly of God youth organization, will hold an area-wide rally at the Chelsea Assembly of God church on Old US-12, just east of South Main St., at 7:30 p.m. Saturday.

The Rev. James O. Sutton, Sr., pastor of the Chelsea church, will be the host pastor.

The Rev. Sutton said yesterday that the Rev. E. W. J. Ruri, zone chairman, had announced that the Rev. Warrick of Tecumseh will present music and will also speak at the rally.

The rally is open to the public.

New Book Sale Planned At Library

Beginning Friday (tomorrow) and continuing until Monday, Nov. 28, at McKune Memorial Library, a wide selection of new books suitable for Christmas gifts will be placed on sale.

A similar new-book sale held at the library last year proved to be such a convenience to Chelsea residents that it is being repeated at this time.

Through the co-operation of an Ann Arbor book shop, books of fiction, biography, etc., including current best sellers will be on sale for adults.

A wide selection of children's books will be available.

Mrs. David Soule, who as special activities committee chairman for the library Board is in charge of the project, said any books they do not happen to have in the display may be ordered.

Volunteers from the Woman's Club and Child Study clubs will be assisting at the sale.

Many Groups Are Joining in All-Out Effort

Several Chelsea area organizations have appointed representatives to attend an open meeting of the Dexter Chamber of Commerce next Tuesday evening, Nov. 22, to lend support to the Dexter organization in its efforts to have toll-free telephone service installed between Chelsea and Dexter.

N. J. Pratkan, manager of the Ann Arbor office of Michigan Bell Telephone Co., is scheduled to be present at the meeting to report on a survey made by the company during the past 30 days relative to the number of calls between the two communities and other information directly related to the subject.

At a previous meeting in Dexter, Pratkan mentioned that the number of calls between the two communities would be considered in making a survey of the extent of "mutual community interest." Several of those present stated, however, that they did not believe the direct calls between Dexter and Chelsea would provide a true picture since to avoid paying toll charges, calls often were first placed to a third party in Ann Arbor and then relayed to Dexter or Chelsea as the case might be. Ann Arbor telephone customers have toll-free service to both communities.

The Dexter meeting scheduled for Nov. 22 will begin at 8:30 p.m. and will be held in the Dexter Village Fire Hall.

Farm Bureau groups and other organizations in the Chelsea-Dexter area have been discussing the subject of toll-free service between the two communities at their meetings for more than two years and have at various times appointed committees to approach the telephone company in an effort to promote the plan.

The Chelsea Village Council at its Nov. 2 meeting, passed a resolution requesting Michigan Bell telephone service between Chelsea and Dexter on a toll-free basis.

The Dexter Chamber of Commerce has extended an invitation to all interested persons to attend the Nov. 22 meeting. Since the number of people who show an interest in the proposed toll-free telephone service between the two neighboring communities might conceivably have a bearing on the company's decision in the matter, it is important that those who are interested make a special effort to be present.

Word Received of Mrs. Chris Zogleman's Death in Kansas

Mr. and Mrs. Walter Finkbe were notified Tuesday of the unexpected death that morning of Mrs. Chris Zogleman of Wichita, Kan., at a Wichita hospital.

Mrs. Zogleman had visited here several times while her son and family, Mr. and Mrs. Wilbert Zogleman and children lived here.

The Wilbert Zoglemans now live at Burns.

Film Report, 'Russia Today' To Be Shown Here Monday

to be the first complete film report of Russia as today, with Russ Potter, in a narrator, an evening of entertainment is promised. Chelsea area people who attend the program sponsored by the Chelsea Rod and Gun club at Chelsea High school auditorium next evening.

"Russia Today" is the title of the film report which is described as uncensored story of a 10,000-mile journey throughout the length and breadth of Russia.

For look the pictures him subjects including Russian life of all walks of life as well as of museums, theatres, an Orthodox church services, rooms in Soviet schools, col-

lective farms, Russian hospitals, sanatoriums, nurseries for workers children, the Khrushchev bread factory, and many others.

Tickets for the program are on sale at Merkel Brothers, Chelsea State Bank, Chelsea Drug Store and Schatz Cigar, and at the door.

Very few Americans have been in Russia since the Communists came into power, and many have wondered what the country and its people are like today. The complete coverage provided by the colored moving picture made by Potter and his party, really tells the story in detail and, according to Rod and Gun club members, sponsors of the program here is assurance of "an entertaining and most enlightening evening."

Disastrous Fire Destroys Earl Heim Farm Buildings

One of the most disastrous fires in this area for many years destroyed two large barns, a house, tool shed, double carport, garage and damaged the upper part of the farm of Mr. and Mrs. Earl Heim, 11111 Elm Rd., near Sylvan Rd., yesterday afternoon.

One of the barns was 75'x48' and the other 64'x30' in size. The fire started in the upper part of the larger barn.

In addition to the buildings destroyed by the fire, the loss included approximately 4,000 bales of hay, two tractors, a combine, plow, cultivators and other farm machinery, as well as a farm truck parked beside the garage. That from the blaze was so great that no one could get to the house to drive it away.

A herd of dairy cattle were saved by Ralph and Glenn Heim, 11 and 12-year-old sons of Earl Heim. They told their father that the fire hadn't reached the barn when the cattle were being led to the barn a burning floor.

Heim was not at home when the fire was discovered by his wife, who called the Chelsea Fire Department at 2:28 p.m.; however, Heim and the six children in family and two school friends, Larry and Larry Bott, all were home when Mrs. Heim noticed the fire and looking for its source, the upper part of the barn.

Heim said later he had been in the barn to pick up a sack of feed a half-hour before he left.



DISASTER STRIKES the Earl Heim farm Sunday afternoon as the above photo shows the complete destruction of the big barn. Firemen were successful in saving the house but other out-

buildings, farm machinery and a truck were destroyed.

The buildings were all ablaze when Chelsea firemen reached the scene and they concentrated their efforts on saving the house and keeping the blaze from a gas tank near the garage. The wall of the garage nearest the tank was all that remained after the fire was brought under control.

Chelsea Fire Department Captain George Atkinson was in charge of the Chelsea firemen who remained on

the scene until 8 p.m. He said the men used 13,000 gallons of water in fighting the fire.

Manchester and Grass Lake fire departments also assisted in fighting the blaze.

The roof of the house caught fire several times but firemen succeeded in saving the structure. There was smoke and water damage inside the house, but the fire was confined to the roof and attic. Roof repairs were begun the first of the week.

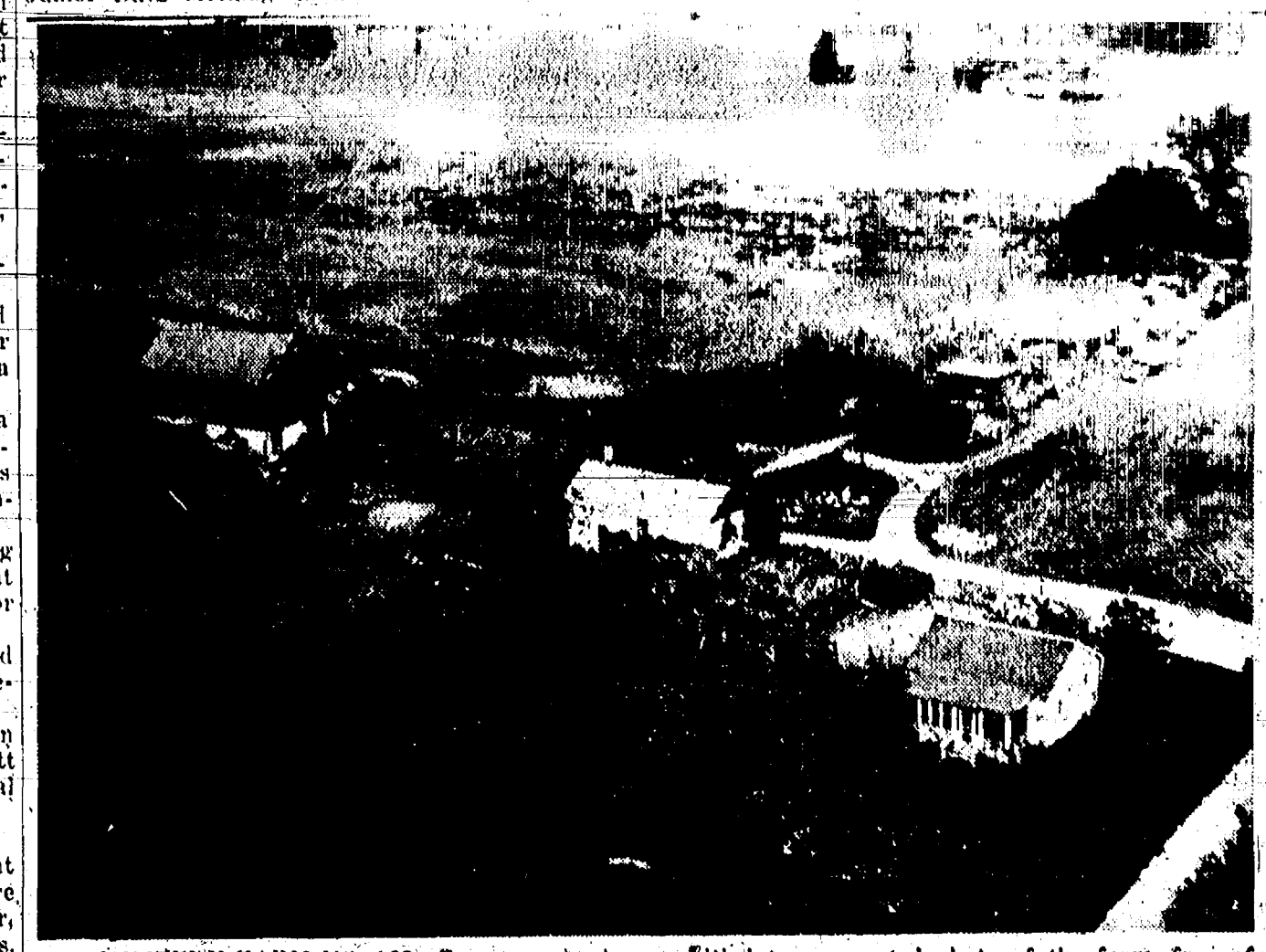
Mr. and Mrs. Heim were staying

at the home of neighbors, Mr. and Mrs. Lee Ulrich, until repairs were completed so they could return to their home. The children were also staying at the homes of neighbors and friends.

In addition to the two older sons, the children are Harold, 8, Marvin, 8, Elaine, 6, and Arnold who will be two in January.

Heim said yesterday it was impossible to estimate the damage in terms of dollars until an inventory is completed.

Mr. and Mrs. Heim were staying



MYSTERY FARM NO. 125—Do you recognize this farm? It is the 125th in the current series of photos of area farms published each week for readers to identify if they can. The owner is entitled to a mounted photo of the farm, free of charge, if he will call at The Standard office by Saturday. If you recognize the place call The Standard at once, GR 5-3581.



BOWLING NEWS



Monday Night Owl League

Standings as of Nov. 7

	W	L
Turner Electric	22	10
Trinkle Excavating	20	12
Foster's Men's Wear	19	13
George's Tree Service	18 1/2	13 1/2
Meyers' Finer Food	18	14
Chelsea Drug	17	15
Chelsea State Bank	16	16
Waterloo Garage	14	18
Chelsea Lumber	13 1/2	18 1/2
Klump Bros.	13	19
Lightweights	12	20
Michigan Bell	9	23

200 games: Keusch, 219; Hanson, 219.
500 series: Keusch, 555; Hanson, 530; Abell, 515; Wilkerson, 512; Forner, 508.

Paid sick leave provisions in collective bargaining contracts are more prevalent in non-manufacturing than in manufacturing industries, according to a study by the U. S. Labor Department.

Chrysler Proving Ground League

Standings as of Nov. 8

	W	L
Frigid Products	24	8
Wolverine Kegs	23	9
UAW Local 1284	19	13
Foot's Service	16	16
Weber's Dairy Bar	16	16
Frank's Bar	15	17
Dotting's Marathon	15	17
The "Pub"	15	17
Knoll's Ashland Service	14	18
Carling's Black Label	13	19
Tison Motor Sales	11	21
Drewry Beer	11	21

200 scores: Poertner, 210.
500 series: Poertner, 555; Padgugham, 546; Stevens, 543; Van DeGinsle, 542; Dann, 540; Pike, 513.

Guests from Saturday until Tuesday morning at the home of Dr. and Mrs. L. J. Paul, were the latter's mother, Mrs. Fred McNutt, and sister and brother-in-law, Mr. and Mrs. Thiel Post, all of Charleston, Ill.

Grass Lake-Chelsea Women's League

Standings as of Nov. 9

	W	L
Pabst Excavating	45	11
Colonial Manor	39	17
Three Sons Bar	39	17
Niehau Grocery	38	18
Forner's Take-Out	30	26
Sail Inn	27	29
Hank's Refrigeration	25	31
Strait & Prentice	24	32
Detting Marathon	24	32
Pete's Shell Service	20	36
A. D. Mayer, Ins.	14	42
Meyers Grocery	11	45

Congratulations this week to R. DeBolt for a 210 game and a 525 series.
450 and over: B. Hafley, 493; R. West, 478; B. Mains, 401; D. Thelen, 455.
400 and over: V. Padgram, 448; G. Barker, 444; E. Wyers, 441; M. Stofor, 438; M. Eubanks, 431; B. Pabst, 421; G. Ellola, 421; M. Brienewisner, 421; J. Weaver, 420; V. Bahnmiller, 413; M. Burdett, 408; M. Neal, 401.

Splits picked up: M. Brienewisner, 4-5-7; B. Hafley, 3-10; D. Fouty, 3-10; M. A. Walz, 5-6.

Women's League

Standings as of Nov. 9

	W	L
Chelsea Lanes	25 1/2	6 1/2
Anderson's	23	9
Palmer's T-Birds	21	11
Chelsea Milling	21	11
Wilson Dairy	18	14
Chelsea Cleaner's	14	18
Jiffy Mixers	14	18
Louie's Snack Bar	13	19
Foster's Men's Wear	12	20
Balmer's Brake Service	11	21
Chelsea Grinding	10 1/2	21 1/2
Stop & Shop	9	23

500 series and over: L. Dove, 506.

450 series and over: D. Kinsey, 484; P. Poertner, 484; R. Johnson, 482; T. Hanked, 469; N. Kern, 461; M. Ritter, 459; R. Hummel, 458; D. Frisbie, 453; D. Albert, 453.

400 series and over: A. Knickerbocker, 443; P. Shoemaker, 442; F. Lake, 442; A. Lutovsky, 439; J. McKel, 436; D. Erickson, 433; M. Scott, 433; D. Eismann, 432; J. Miller, 417; M. Eder, 417; C. Stoffer, 414; B. Worden, 412; L. Foster, 410; G. Wheeler, 409; L. Schiller, 408; D. M. Dault, 405; M. Walz, 400.

Splits picked up: D. Erickson, 3-10; 3-10; 3-10; J. Eckhardt, 8-10; 3-10; T. Hanked, 5-6-10; C. Klink, 5-4; N. Kern, 3-10; R. Lutovsky, 5-10; F. Miller, 6-10; V. McCluar, 3-10; 2-7; M. Scott, 5-10; G. Wheeler, 2-5-7.

Chelsea Mixed League

Standings as of Nov. 11

	W	L
Jack Pats	25	7
Town & Country	19	13
Alber Motor Sales	19	13
Nine Pins	19	13
First Nite's	17	15
Washington Tigers	16	16
Bull Dozers	13	19
Ten Pinner's	12	20
Heydhauff's GE	12	20
Stinkers	8	24

475: Men: O. Johnson, 549; J. Linebaugh, 534; L. Mayne, 509; F. Schumm, 495; V. Pabst, 493; M. Packard, 491; J. Turner, 481.

450: Women: E. Mayne, 495; A. Turner, 457; V. Geer, 450; R. Winchester, 443; N. Simpson, 433.

175: Men: O. Johnson, 203-178; J. Linebaugh, 178-178-178; J. Harman, 194; F. Schumm, 188; V. Pabst, 185; L. Mayne, 181; J. Turner, 180; M. Packard, 178; J. Alber, 176.

150: Women: E. Mayne, 187-181; N. Simpson, 168-166; V. Geer, 167; A. Turner, 164; B. Pabst, 158; N. Eismann, 156; L. Kusterer, 156.

Jerry Linebaugh had a triplicate score of 178.

Classic League

Standings as of Nov. 10

	W	L
Wolverine Tavern	19	18
Chelsea Lanes	18 1/2	18 1/2
Stroh's Beer	17	19
Seitz Tavern	16 1/2	19 1/2
Pfeiffer Beer	14	21
Blatz Beer	11	25

200 games: Bauer, 233; J. Poertner, 213; Nabb, 207; Winchester, 204; Nabb, 201.
500 series: Nabb, 593; J. Poertner, 578; Winchester, 551; Poertner, 538; Bayer, 520; Larson, 523; Feist, 517; Volak, 517; Burnett, G. 510; McManis, 511; McClanahan, 506; Pilkington, 504.

Chelsea Junior League

Standings as of Nov. 12

High team series: Slocum Contractors, 2:187.

High team game: Slocum Contractors, 7:03.

High individual series: Dave Feldkamp, 640.

High individual game: Dave Feldkamp, 210.

Dexter Mixed League

Standings as of Nov. 11

	W	L
Co-Willies	29	11
Drewry's	27 1/2	12 1/2
O'Connor's Service	27	13
Alexander & Wilkerson	26	14
Schneider's Grocery	22	18
Graf & Herda	21	19
Rabbits & Dove	20	20
H & M's	20	20
Bowen & Schwartz	18	22
Wolverine Tavern	18	22
Sanderson & Norris	18	22
Cimco Engineering	17	23
Robertson & Simpson	16	24
Williebobbers	15	25
Price's Service	14	26
Trailers	11 1/2	28 1/2

Team-high three games: Drewry's, 2:108.

Team-high single game: Drewry's, 740.

Men's high three games: Bob Fitzsimmons, 571.

Men's single game: Don Trout, 223.

Ladies high three games: Pearl Fitzsimmons, 547.

Ladies high single game: Pearl Fitzsimmons, 202.

Village Granted \$5,179 Share from Vehicle Fund

Chelsea will receive \$5,179.01 and Washtenaw county will receive a total of \$289,357.48 from the third quarterly Motor Vehicle Highway Fund collections, according to an announcement by the Michigan State Highway Department.

Highway Commissioner John C. Mackie said net receipts of the Motor Vehicle Highway Fund for the third quarter of this year amounted to \$42,255,054, an increase of \$794,150 over the same period of 1954, which was \$41,460,903.

Gross collections amounted to \$43,072,763, from which collection costs of \$1,607,040 and the Waterways Commission's share amounting to \$210,668 were deducted.

All state gasoline, weight and diesel fuel taxes, and a small amount of miscellaneous fees are deposited in the Motor Vehicle Highway fund.

After deductions, the rest of the money is distributed under provisions of state law which provides that 47 per cent goes to the State Highway Department for use on state trunkline highways in both rural and urban areas, 35 per cent to counties for use on county roads, and 18 per cent to incorporated cities and villages for their roads and streets.

Under this formula, the State Highway Department will receive \$19,859,875 as its share of the third quarter collections, while the counties will receive \$14,789,269 and the incorporated cities and villages will get \$7,605,609.

A total of 83 counties and 610 incorporated cities and villages benefitted.

The NATIONAL OUTLOOK

By RALPH ROBEY

Are Stock Prices Going Up or Down?

What happens to the price of securities on the New York Stock Exchange is of fundamental importance for the three following reasons.

First, many millions of individuals own securities directly and many more millions own them indirectly through pension and mutual funds, and other investment organizations.

Second, the behavior of the market has a widespread psychological effect upon business men and the public at large.

Third, many persons believe that the stock market is one of our most accurate forecasters of the business trend. The record does not support this contention, but the belief persists.

Recently the market has been having a rather tough time. What may one conclude as to the future?

As usual we shall use the Dow Jones Industrial average in discussing the market. This is the most widely used measure of stock prices, and it also is the basis of the so-called Dow theory. This theory is accepted as a guide for investment by only a limited number of persons, but it proves correct so much of the time that it has a decided influence upon the market itself.

The high of the market as measured by the Dow-Jones industrial average was last January 5, at 685—and that was an all-time high. At that level stock prices obviously were vulnerable. The yield on high grade stocks was well below that on the best bonds, and prices were at a very high multiple of earnings. A decline was in order and it came, not as a continuous trend, but persistently. By March 8 the average was 699. Then came a substantial rally.

Now, under the Dow theory, a low must be tested. That took place in May and the previous low

held. In July the low again was tested and it held.

Usually when the market makes a low and that figure holds under a test, it means that we are ready for a sustained advance. With two tests that failed to penetrate the previous low, it appeared we certainly should move forward. But this time it was not to be. In September the market went through the previous low, and in October still another new bottom was reached. We are now in the position, therefore, of having a low which has not been tested. Almost certainly it will be in time.

Does this mean that an investor should sell his securities with the hope of buying them back at a lower cost, or if he already has a cash position that he should delay making purchases?

It certainly does not mean this. If one needs some losses to offset gains, it may be wise to shift securities, but selling with the hope of buying back at a lower price is always risky business—especially in view of present taxes—and this is not the time to take this gamble. It also must be borne in mind that one neither buys nor sells "the market." He buys or sells individual stocks, and the smart investor does this in a declining market just as well as in an advancing market.

At present there are many companies whose securities have been over-sold, and they may be purchased with about as much confidence as one can ever have in the stock market. Even some of the "blue-chips," and many of the "pale blue chips," fall in this category, and their yield is fairly good.

Now picking out an attractive stock to buy is not an easy task but it is absolutely essential if one is to make profits. Granting one makes or gets such an expert analysis, this is a good time to buy assuming that one does not get worried, or panic if the price happens to fall below what he paid.

SUBSCRIBE TODAY TO THE CHELSEA STANDARD!

CHILI SUPPER

Oyster Stew - Hot Dogs - Pie and Coffee

SATURDAY, NOV. 19

Serving Starts at 5:30 p.m., continues to ?

ST. JOHN'S E & R CHURCH, FRANCISCO

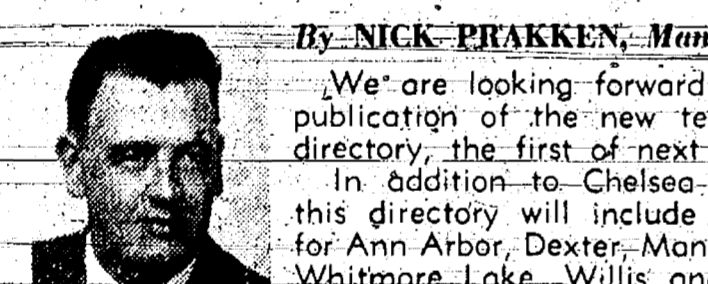
Thank You...



I would like to express my thanks to the voters of Washtenaw County. Your vote in the recent election was appreciated and your faith and trust is most gratifying.

George A. Petersen
SHERIFF

CHELSEA



By NICK PRAKKIEN, Manager

We are looking forward to the publication of the new telephone directory, the first of next month. In addition to Chelsea listings this directory will include listings for Ann Arbor, Dexter, Manchester, Whitmore Lake, Willis and Ypsilanti.

The alphabetical listings will be listed separately by exchanges, however, the classified listings will be interfiled for all the exchanges in the directory. This arrangement was determined from an extensive area-wide survey that was conducted by the Market Opinion Research Company of Detroit. We hope you will like it.

COME NOVEMBER, the ladies start thinking about fixing up the house for the holidays ahead. That's where your Yellow Pages come in handy! If you've been putting off repairing that lamp or repainting the walls, just reach for your Yellow Pages! You easily can find a professional who will be happy to do the job. Use your Yellow Pages often for any product or service you need—9 1/2 out of 10 people do.

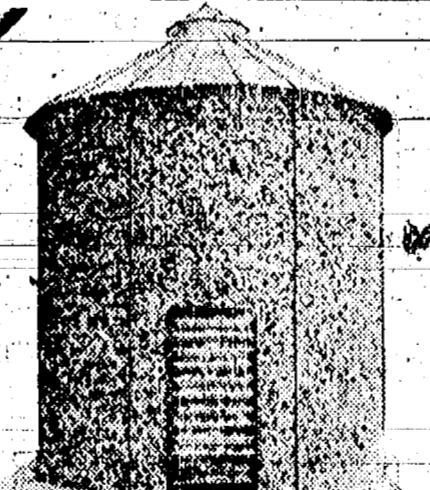


ONE OF CUPID'S BIGGEST HELPERS this 20th century seems to be the telephone. We recently heard via the grapevine (or should we say the telephone wire?) that when Crown Prince Akihito of Japan met his present wife, Michiko Shodo, on the tennis courts, they were denied a courtship in the American sense because of Japanese tradition. How did love find the way? By telephone. Akihito called Michiko several times a day, and she accepted his proposal of marriage during one of the conversations.

SPEEDY BAR-LOK

CORN CRIBS

THE EASIEST TO ERECT OF THEM ALL



ONLY \$319.50 1200 bu. size f.o.b. Delwin

Exclusive Bar-Lok construction and nine roof rafters guarantee quick placement of roof panels; cut erection time to a minimum. Steep pitched roof is scientifically designed at 33° angle. Just right for filling all the way to the top. And you don't have to climb inside a Speedy Corn Crib to kick the corn out to the edges. Extra steep pitch (45°) roof available. Add a heavy gauge Speedy steel liner, and the Speedy Corn Crib converts to a grain bin. Speedy has a corn crib for every farm, and a price for every farm budget. Choose a 900-bu., 1200-bu. or 1700-bu. Speedy Corn Crib with steep or extra steep roof, 5-gauge or 2-gauge wire. The new Speedy Weather-Ban strip for attachment at the top of any crib, is optional at extra cost. See us for more information.

Blaess Elevator Co.
PHONE GR 9-6511
Four Mile Lake Chelsea, Mich.



NEW TEMPEST

AMERICA'S ONLY FRONT ENGINE REAR TRANSMISSION CAR
155 H.P. FROM FOUR CYLINDERS*

The new-size Tempest is primed to scoot on less gas! Five hot versions of the Trophy 4 engine, 110 to 155 h.p. Any choice will move out in a hurry, sail up a steep hill in high gear, has the power for quicker, safer passing. Front engine is balanced by rear transmission. (Standard shift or extra-cost automatic.) Takes weight off the front. Easy steering. Longer tire life. Adds ballast in the rear. Improves traction and braking. No big

floor hump. Foot room and leg room for six men. Independent suspension at all 4 wheels. Most other cars only have it in front. Wide-Track, too. The Tempest wheels are set farther apart than the wheels of other new-size cars. Gives a solid stance. Secure cornering. There's a 4-door sedan and a station wagon. Prices come close—or even beat—the tags on the compacts. If you're figuring on a new car—figure on a new Tempest.



THE HOT TOPIC IS THE NEW TEMPEST BY PONTIAC



THE NEW TEMPEST IS SOLD AND SERVICED BY YOUR LOCAL AUTHORIZED PONTIAC DEALERSHIP

HARPER SALES & SERVICE
118 W. MIDDLE STREET
CHELSEA, MICH.

CAREFUL DRIVERS

SAVE \$\$\$ — UP TO 20% IN THE

America's Fore
Loyal Group

Seaboard Fire & Marine Insurance Co.

A DEPENDABLE CAPITAL STOCK COMPANY

DAN MARONEY

PHONE GR 9-5631

TOTAL FIRE, MARINE & CASUALTY COVERAGES

GASAVER

MORE, than just
a furnace...

In mild weather, just half the
GASAVER burner jets supply plenty
of heat... in cold weather, all jets burn.
No overheating, no fuel waste. Phone us
today for the money-saving details.

your **WILLIAMSON** dealer
JOHN W. STEELE
SHEET METAL
521 Garfield Chelsea, Mich. Ph. GR 9-4451

Distinguished Beauty

FAITH

GUARANTEED QUALITY
DIAMOND RINGS

12 DIAMOND DUET
Elegant in design,
elegant in beauty,
magnificently
matched.

6 DIAMOND DUET
Shimmering magic
in a brilliant setting
from our large
selection

FROM \$20.00 UP
LAY-AWAY NOW FOR CHRISTMAS

W. F. KANTLEHNER
JEWELER - OPTOMETRIST
"Where Gems and Gold Are Fairly Sold"
102 East Middle St. Ph. GR 9-6721

**BIG TIME
WRESTLING**

BERT RUBY, MATCHMAKER

DEXTER HIGH SCHOOL
FRIDAY, NOV. 18

Beginning at 8 p.m.
SPONSORED BY JUNIOR CLASS

LEAPING LARRY CHENE
VS.
CRUSHER CORTEZ
VS.
FEARLESS FRANK SHIELDS
VS.
ALI BEY

PLUS
★ MIXED TAG BOUT
★ MIXED BOUT
Midgets and Heavyweights

Tickets: \$1.50 and \$2.50

Rural Correspondence

Items of Interest About People You Know

UNADILLA

There will be a family night
supper at the Unadilla Memorial
Hall Saturday evening, Nov. 19, at
7 o'clock. Everyone in the com-
munity is invited.

Miss Jeanne Barnum spent the
week-end with Miss Lathorne Pin-
combe in Kalamazoo.

Mrs. Francis Richmond was at
the U. of M. hospital in Ann Arbor
Friday for tests.

Mrs. Mae Kniser has returned
home from St. Joseph Mercy hos-
pital.

Mr. and Mrs. Owen Anglim and
Miss June Vincent of Pontiac spent
Monday with Mr. and Mrs. Ralph
Wright.

Mr. and Mrs. Edwin Corser are
spending the week at their cabin
in the north, hunting deer.

Mr. and Mrs. Wayne Ellsworth
spent Sunday evening with Mr.
and Mrs. Clair Barnum.

Mr. and Mrs. Francis Richmond
and son, Glenn and Mrs. George
Goodwin spent the week-end with
Mr. and Mrs. Lovell Barker in De-
troit.

WATERLOO

The November meeting of the
Ladies' Aid was held at the par-
sonage with Mrs. Silvernail and
Mrs. Lavon Beeman as hostesses.
On Thursday afternoon, twelve
members responded to roll call and
members were glad to welcome
Mrs. Gaddis and daughter as new
members. The president, Barbara
Beeman, opened the meeting with
all saying the Lord's Prayer in
unison. Eloise Schulz then gave a
report of the last meeting and
called the roll. The treasurer, Car-
rie Beeman, also gave a report on
finances. The next project will be
a rummage and bake sale on
Dec. 3, with Carrie Beeman as
chairman. Donations will be gladly
accepted. Redecorating in the
school house and some remodeling
will be the next project in charge
of Lucy Platt. A nice picnic table
was a gift from the Bernard
Prattiches. The Ladies' Aid are an-
xious for the return of folding
chairs, borrowed some time ago.
Following the meeting, the hosts-
esses served refreshments. The
meeting closed by repeating the
benediction. Mrs. Silvernail will be
hostess for the annual Christmas
party in December.

Sunday callers at the Leigh
Beeman home were their cousin,
Mrs. John Beeman, and Mr. and
Mrs. Henry Jacqueman of Lansing.
Mrs. Wilbur Beeman and son, Gor-
don, and friend Mike Bayze, and
Mrs. Ione Moeckel.

Mr. and Mrs. Henry Mollenkopf
of Parma spent Thursday evening
with her brother, Glenn Rentschler
and family. Sunday afternoon cal-
lers were Mrs. Harley Loveland
and granddaughter.

Mr. and Mrs. Will Barber, sister,
Mrs. Edna Walz and Mrs. Mina
Moeckel and daughter, Odema, and
cousins Mr. and Mrs. Harold An-
drews, of Ann Arbor attended the
Golden Wedding open house Sunday
for Mr. and Mrs. Ezra Hannebald
at St. Jacob's Lutheran Church.

Mr. and Mrs. Alvin Wahr and
family of Helm Rd. were Sunday
dinner guests of Mrs. Wahr's par-
ents, Mr. and Mrs. Ezra Heininger.

Mr. and Mrs. Alvin Brassow were
at Waterloo Sunday and were dis-
tinct guests of Mrs. Brassow's sister
and brother-in-law, Mr. and Mrs.
Richard Hadley.

Mr. and Mrs. Robin Wright of
Chelsea were guests Sunday at
the home of the former's parents,
Mr. and Mrs. Burton Wright.

Mr. and Mrs. Jonald Heydauff
spent Sunday evening at the home
of the former's parents, Mr. and
Mrs. Clifford Heydauff, on Kalm-
bach Rd.

Mrs. John Fischer is a patient
at St. Joseph Mercy hospital, Ann
Arbor.

According to Federal statistics
the American farmer receives 52
cents of every dollar spent by con-
sumers for his products.

NORTH FRANCISCO

Mrs. Eva Notten and Mr. and
Mrs. Chester Notten visited the
former's brother, Gilbert Mainy,
Wednesday and Saturday at St.
Joseph Mercy hospital, Ann Arbor.

Mr. and Mrs. Dale Loveland and
daughter, Barbara, spent Friday
evening with the former's mother,
Mrs. Leonard Loveland.

Mrs. Leonard Loveland was a
Sunday evening supper guest of
her son and daughter-in-law, Mr.
and Mrs. Harley Loveland.

Mr. and Mrs. Henry Notten are
on a hunting trip in northern
Michigan.

Last week callers of Mr. and
Mrs. Roy Miller were Mr. and Mrs.
T. G. Riemenschneider, Mr. and
Mrs. Benjamin Bower, Edson Whit-
aker, Richard Harvey, Max Hoppe,
Mrs. Esther Waddell and George
Zeeb, and Mr. and Mrs. Lawrence
Riemenschneider. Emerson Lesser
was a Tuesday dinner guest.

Mrs. James Clark and daughter
and Mrs. Norman Hinderer and
family are spending this week with
their mother, Mrs. Nina Wahl,
while their husbands are north,
hunting.

Mrs. Douglas Kennedy and chil-
dren and Mrs. Loren Hinderer and
family spent an afternoon last
week with their mother, Mrs. Nina
Wahl.

Sunday callers of Mr. and Mrs.
Clarence Lehman were Mr. and
Mrs. Bob Lochmeier and family,
of Wayne.

Joe Kasper was a Saturday af-
ternoon caller of Mr. and Mrs.
Nelson Peterson, Mr. and Mrs. Mo-
Cloud of Plymouth and Mrs.
Esther Waddell were Sunday after-
noon callers. Mr. and Mrs. Walter
Riemenschneider were Wednesday
supper guests there.

Mr. and Mrs. Clifford Peterson
left Saturday morning for Alpena.

Figures for the last 12 years
should calm some jittery nerves
about long-ranged, high-powered
rifles and their role in accidents.

Of 508 accidents where informa-
tion is available covering this pe-
riod, the distance from gun muzzle
to victim was 10 yards or less
the range of a bean shooter in
over one-half of the shootings.

Furthermore, the distance was un-
der 100 yards in 85 per cent of
all cases—well within the lethal
range of a 12-gauge rifled slug.

Slightly more than one-fourth of
all accident victims were people
who shot themselves. Added to this
sobering thought is the fact that
another very large percentage of
shooters were the victims' own
hunting partners.

In summing up a list of tips on
hunter safety, the report leaves
this thought as its guideline. Hunt-

ing is like driving. A good driver
and a careful hunter see dangerous
situations developing and avoid
them. They don't take the right-
of-way all the time. They try to
compensate for another person's
foolishness by exercising their own
judgement. They are the kind of
people you like to drive with—or
to hunt with.

Formerly a baker in Chelsea,
Alexander now decorates cakes and
conducts classes in cake decoration
as a part-time profession and
hobby.

Eighteen members and five
guests were present for the dem-
onstration.

Co-hostesses were Mrs. Ross
Batzdorfer and Mrs. Ruth Cattell.

The next meeting will be the
Christmas party Dec. 8 at the
home of Mrs. Warren Eisenbeiser.

SUBSCRIBE TODAY
TO THE CHELSEA STANDARD!

Disaster gives no warning.
That's why an Auto-Owners
Homeowners Policy can be
so valuable... just in case.

Call us today.

Auto-Owners
INSURANCE COMPANY

A. D. MAYER
"Insurance for Every Need"

115 Park St. Chelsea, Mich.
Phone: Office GR 5-7131
Res. GR 5-4201

NOTICE!
FINAL DAY
FOR RAKING LEAVES
INTO THE STREETS

will be
SATURDAY, NOV. 26

DEPT. OF PUBLIC WORKS

Kellie Allen, Superintendent

Additional information about
this may be obtained from your
local social security office. The
people there will also be glad to
assist you in applying for bene-
fits, and tell you what proofs you
will need to establish your eligi-
bility.

Additional information about
this may be obtained from your
local social security office. The
people there will also be glad to
assist you in applying for bene-
fits, and tell you what proofs you
will need to establish your eligi-
bility.

Additional information about
this may be obtained from your
local social security office. The
people there will also be glad to
assist you in applying for bene-
fits, and tell you what proofs you
will need to establish your eligi-
bility.

Additional information about
this may be obtained from your
local social security office. The
people there will also be glad to
assist you in applying for bene-
fits, and tell you what proofs you
will need to establish your eligi-
bility.

Additional information about
this may be obtained from your
local social security office. The
people there will also be glad to
assist you in applying for bene-
fits, and tell you what proofs you
will need to establish your eligi-
bility.

Additional information about
this may be obtained from your
local social security office. The
people there will also be glad to
assist you in applying for bene-
fits, and tell you what proofs you
will need to establish your eligi-
bility.

Additional information about
this may be obtained from your
local social security office. The
people there will also be glad to
assist you in applying for bene-
fits, and tell you what proofs you
will need to establish your eligi-
bility.

Additional information about
this may be obtained from your
local social security office. The
people there will also be glad to
assist you in applying for bene-
fits, and tell you what proofs you
will need to establish your eligi-
bility.

Additional information about
this may be obtained from your
local social security office. The
people there will also be glad to
assist you in applying for bene-
fits, and tell you what proofs you
will need to establish your eligi-
bility.

Additional information about
this may be obtained from your
local social security office. The
people there will also be glad to
assist you in applying for bene-
fits, and tell you what proofs you
will need to establish your eligi-
bility.

Additional information about
this may be obtained from your
local social security office. The
people there will also be glad to
assist you in applying for bene-
fits, and tell you what proofs you
will need to establish your eligi-
bility.

Additional information about
this may be obtained from your
local social security office. The
people there will also be glad to
assist you in applying for bene-
fits, and tell you what proofs you
will need to establish your eligi-
bility.

Additional information about
this may be obtained from your
local social security office. The
people there will also be glad to
assist you in applying for bene-
fits, and tell you what proofs you
will need to establish your eligi-
bility.

Additional information about
this may be obtained from your
local social security office. The
people there will also be glad to
assist you in applying for bene-
fits, and tell you what proofs you
will need to establish your eligi-
bility.

Additional information about
this may be obtained from your
local social security office. The
people there will also be glad to
assist you in applying for bene-
fits, and tell you what proofs you
will need to establish your eligi-
bility.

Additional information about
this may be obtained from your
local social security office. The
people there will also be glad to
assist you in applying for bene-
fits, and tell you what proofs you
will need to establish your eligi-
bility.

Additional information about
this may be obtained from your
local social security office. The
people there will also be glad to
assist you in applying for bene-
fits, and tell you what proofs you
will need to establish your eligi-
bility.

Additional information about
this may be obtained from your
local social security office. The
people there will also be glad to
assist you in applying for bene-
fits, and tell you what proofs you
will need to establish your eligi-
bility.

Additional information about
this may be obtained from your
local social security office. The
people there will also be glad to
assist you in applying for bene-
fits, and tell you what proofs you
will need to establish your eligi-
bility.

Additional information about
this may be obtained from your
local social security office. The
people there will also be glad to
assist you in applying for bene-
fits, and tell you what proofs you
will need to establish your eligi-
bility.

Additional information about
this may be obtained from your
local social security office. The
people there will also be glad to
assist you in applying for bene-
fits, and tell you what proofs you
will need to establish your eligi-
bility.

Conservation Dept. Reports Deer Hunting Getting Safer

Lansing—Deer hunting in Mich-
igan is a pretty safe sport and it
is getting safer.

This is the gist of a 16-page
review of hunter safety in the cur-
rent issue of "Michigan Conserva-
tion," the Conservation Depart-
ment's bimonthly magazine.

Referring to the state's 768 re-
corded deer hunting gun accidents
for the last 12 seasons, the report
presents some interesting findings
which knock many popular no-
tions into a cocked hat.

For example, some hunters feel
that when all deer including bucks,
does and fawns, are legal game
hunters shoot at sounds or at
"half" and this form of hunting
makes it too dangerous to be in
the woods. They recommend back-
stepping to the one-buck law claim-
ing, "If you have to wait to see
horns, you won't shoot at a man."

It may sound good, but it just
isn't so, figures from Michigan and
other states show. In Michigan the
present accident rate is just about
half what it was in the early
1940's—before "any deer" seasons
came into the picture, according
to the report.

Spiking another common mis-
conception about hunting being most
dangerous in crowded areas, the
report points out with statistics
that the hunter's chances of hav-
ing an accident are no greater if
he hunts in the northern lower
peninsula, where pressure, aver-
ages about 25 hunters per square
mile, than they are above the
Straits where seven hunters per
square mile is about average. In
fact, the Upper Peninsula accident
rate has been a little higher in
recent years.

Figures for the last 12 years
should calm some jittery nerves
about long-ranged, high-powered
rifles and their role in accidents.

Of 508 accidents where informa-
tion is available covering this pe-
riod, the distance from gun muzzle
to victim was 10 yards or less
the range of a bean shooter in
over one-half of the shootings.

Furthermore, the distance was un-
der 100 yards in 85 per cent of
all cases—well within the lethal
range of a 12-gauge rifled slug.

Slightly more than one-fourth of
all accident victims were people
who shot themselves. Added to this
sobering thought is the fact that
another very large percentage of
shooters were the victims' own
hunting partners.

In summing up a list of tips on
hunter safety, the report leaves
this thought as its guideline. Hunt-

ing is like driving. A good driver
and a careful hunter see dangerous
situations developing and avoid
them. They don't take the right-
of-way all the time. They try to
compensate for another person's
foolishness by exercising their own
judgement. They are the kind of
people you like to drive with—or
to hunt with.

Formerly a baker in Chelsea,
Alexander now decorates cakes and
conducts classes in cake decoration
as a part-time profession and
hobby.

Eighteen members and five
guests were present for the dem-
onstration.

Co-hostesses were Mrs. Ross
Batzdorfer and Mrs. Ruth Cattell.

The next meeting will be the
Christmas party Dec. 8 at the
home of Mrs. Warren Eisenbeiser.

SUBSCRIBE TODAY
TO THE CHELSEA STANDARD!

Disaster gives no warning.
That's why an Auto-Owners
Homeowners Policy can be
so valuable... just in case.

Call us today.

Auto-Owners
INSURANCE COMPANY

A. D. MAYER
"Insurance for Every Need"

115 Park St. Chelsea, Mich.
Phone: Office GR 5-7131
Res. GR 5-4201

NOTICE!
FINAL DAY
FOR RAKING LEAVES
INTO THE STREETS

will be
SATURDAY, NOV. 26

DEPT. OF PUBLIC WORKS

Kellie Allen, Superintendent

Additional information about
this may be obtained from your
local social security office. The
people there will also be glad to
assist you in applying for bene-
fits, and tell you what proofs you
will need to establish your eligi-
bility.

Additional information about
this may be obtained from your
local social security office. The
people there will also be glad to
assist you in applying for bene-
fits, and tell you what proofs you
will need to establish your eligi-
bility.

Additional information about
this may be obtained from your
local social security office. The
people there will also be glad to
assist you in applying for bene-
fits, and tell you what proofs you
will need to establish your eligi-
bility.

Additional information about
this may be obtained from your
local social security office. The
people there will also be glad to
assist you in applying for bene-
fits, and tell you what proofs you
will need to establish your eligi-
bility.

Additional information about
this may be obtained from your
local social security office. The
people there will also be glad to
assist you in applying for bene-
fits, and tell you what proofs you
will need to establish your eligi-
bility.

Additional information about
this may be obtained from your
local social security office. The
people there will also be glad to
assist you in applying for bene-
fits, and tell you what proofs you
will need to establish your eligi-
bility.

Additional information about
this may be obtained from your
local social security office. The
people there will also be glad to
assist you in applying for bene-
fits, and tell you what proofs you
will need to establish your eligi-
bility.

Additional information about
this may be obtained from your
local social security office. The
people there will also be glad to
assist you in applying for bene-
fits, and tell you what proofs you
will need to establish your eligi-
bility.

Additional information about
this may be obtained from your
local social security office. The
people there will also be glad to
assist you in applying for bene-
fits, and tell you what proofs you
will need to establish your eligi-
bility.

Additional information about
this may be obtained from your
local social security office. The
people there will also be glad to
assist you in applying for bene-
fits, and tell you what proofs you
will need to establish your eligi-
bility.

Additional information about
this may be obtained from your
local social security office. The
people there will also be glad to
assist you in applying for bene-
fits, and tell you what proofs you
will need to establish your eligi-
bility.

Additional information about
this may be obtained from your
local social security office. The
people there will also be glad to
assist you in applying for bene-
fits, and tell you what proofs you
will need to establish your eligi-
bility.

Additional information about
this may be obtained from your
local social security office. The
people there will also be glad to
assist you in applying for bene-
fits, and tell you what proofs you
will need to establish your eligi-
bility.

Additional information about
this may be obtained from your
local social security office. The
people there will also be glad to
assist you in applying for bene-
fits, and tell you what proofs you
will need to establish your eligi-
bility.

Additional information about
this may be obtained from your
local social security office. The
people there will also be glad to
assist you in applying for bene-
fits, and tell you what proofs you
will need to establish your eligi-
bility.

Additional information about
this may be obtained from your
local social security office. The
people there will also be glad to
assist you in applying for bene-
fits, and tell you what proofs you
will need to establish your eligi-
bility.

Additional information about
this may be obtained from your
local social security office. The
people there will also be glad to
assist you in applying for bene-
fits, and tell you what proofs you
will need to establish your eligi-
bility.

Additional information about
this may be obtained from your
local social security office. The
people there will also be glad to
assist you in applying for bene-
fits, and tell you what proofs you
will need to establish your eligi-
bility.

Additional information about
this may be obtained from your
local social security office. The
people there will also be glad to
assist you in applying for bene-
fits, and tell you what proofs you
will need to establish your eligi-
bility.

Additional information about
this may be obtained from your
local social security office. The
people there will also be glad to
assist you in applying for bene-
fits, and tell you what proofs you
will need to establish your eligi-
bility.

Additional information about
this may be obtained from your
local social security office. The
people there will also be glad to
assist you in applying for bene-
fits, and tell you what proofs you
will need to establish your eligi-
bility.

Additional information about
this may be obtained from your
local social security office. The
people there will also be glad to
assist you in applying for bene-
fits, and tell you what proofs you
will need to establish your eligi-
bility.

Additional information about
this may be obtained from your
local social security office. The
people there will also be glad to
assist you in applying for bene-
fits, and tell you what proofs you
will need to establish your eligi-
bility.

Additional information about
this may be obtained from your
local social security office. The
people there will also be glad to
assist you in applying for bene-
fits, and tell you what proofs you
will need to establish your eligi-
bility.

Additional information about
this may be obtained from your
local social security office. The
people there will also be glad to
assist you in applying for bene-
fits, and tell you what proofs you
will need to establish your eligi-
bility.

Additional information about
this may be obtained from your
local social security office. The
people there will also be glad to
assist you in applying for bene-
fits, and tell you what proofs you
will need to establish your eligi-
bility.

Additional information about
this may be obtained from your
local social security office. The
people there will also be glad to
assist you in applying for bene-
fits, and tell you what proofs you
will need to establish your eligi-
bility.

Fashion NEWS FOR YOU

Smart New Items
Arriving Daily!
For Your Family Needs
and For Christmas!

JUST ARRIVED!

Corduroy Slippers

Choice of Black and Loden.
One of the most-wanted styles.

\$3.49 and \$3.98

Sizes for Misses
and Women.

Disaster gives no warning.
That's why an Auto-Owners
Homeowners Policy can be
so valuable... just in case.

Call us today.

Auto-Owners
INSURANCE COMPANY

A. D. MAYER
"Insurance for Every Need"

115 Park St. Chelsea, Mich.
Phone: Office GR 5-7131
Res. GR 5-4201

NOTICE!
FINAL DAY
FOR RAKING LEAVES
INTO THE STREETS

will be
SATURDAY, NOV. 26

DEPT. OF PUBLIC WORKS

Kellie Allen, Superintendent

Depend on trucks?

Depend on us for the right ones!

RENT
its in
the...

SELL • BUY • TRADE • HIRE • SERVICE •
LOST and FOUND • SERVICE • T
HELP WANTED • EMPLOYME

WANT ADS!
ADE
OPPORTUNITIES

WANT ADS

The Chelsea Standard

WANT AD RATES
PAID IN ADVANCE—All regular advertisements, 50 cents for 25 words or less, each insertion. Count each figure as a word. For more than 25 words add 2 cents per word for each insertion. "Blind" ads or box number ads, 50c extra per insertion.
CHARGE RATES—Same as cash in advance, with 15 cents bookkeeping charge if not paid before 5 p.m. Tuesday preceding publication. Pay in advance, send cash or stamps and save 15 cents.
CARDS OF THANKS or MEMORIALS—Single paragraph style, \$1.00 per insertion for 50 words or less; 2 cents per word beyond 50 words.
DISPLAY WANT ADS—Rate, \$1.10 per column inch, single column width only. 8-point and 14-point light type. No borders or boldface type. Minimum—1 inch.
COPY DEADLINE—5 p.m. Tuesday, week of publication.

FOR SALE—Muscovy ducks, five or dressed. Helen Valant, 13085 Sager Rd., GR 9-3475. -20

FOR SALE—Large remodeled home on South Main. Reduced again for the last time or will rent. Phone NO 5-5377. -21

LAY-AWAY

A Small Deposit Will Hold Any Toy or Gift Until CHRISTMAS

Chelsea Hardware

FOR SALE—Deer rifle, rabbits, first and second cutting alfalfa hay, and straw. Phone GR 9-5161. -20

ROOM FOR RENT—Gentlemen preferred. 124 Lincoln St. Phone GR 5-8146. -22

PAINTERS, Do-It-Yourselfers—Have Paint You Want Colored? We will tint any color, size or brand you may have. Merkel Brothers. -144f

SEPTIC TANK
CLEANING

Prompt, reliable service by a local firm you know you can depend upon.

FREE ESTIMATES

BOLLINGER

Sanitation Service
Licensed by Mich. Health Dept.
Phone GR 9-5971 Chelsea, Mich. 74f

BUILDING LOTS

1 acre or more on blacktop

Kern Real Estate

622 South Main St.
Chelsea, Michigan
Phone GR 9-7681 or
GREENWOOD 5-4605 144f

NAPOLEON LIVESTOCK
COMMISSION CO.
Located on M-50, Napoleon, Mich.

AUCTION

Every Monday, 2:00 p.m.
Buyers for all kinds of livestock.
Dairy cattle tested sale day.
State approved to handle Bangs
Cows.

For Pickup Service, call Napoleon,
Keystone 6-4201

ORIN and DALE
HESLSCHWERT

CUTE PUPPIES to give away to
good homes. Phone GR 9-1701. -20

Gulf Oil Products

Fuel Oil and Gasoline.

ALBER OIL CO.

Dexter, Mich.

Call Collect.
HA 6-4901 or HA 6-8517 94f

PEACE and
SYMPATHY

... pervades our repose rooms
and chapel... music from our
organ soft and mellow... our
staff kindly, courteous and com-
petent... experienced as funeral
directors for three generations.

Staffan Funeral Home

FUNERAL DIRECTORS FOR THREE GENERATIONS

124 Park Street

Phone GR 5-4417

WANT ADS

TV TROUBLE? Have your TV,
radio, HiFi repaired by a school-
trained radio and TV technician.
Guaranteed workmanship. Service
charge \$3 plus parts. Call GR
5-8380. Porter's TV Service, 212
Buchanan St. -20

IT WILL PAY YOU \$- to drive
out and look at our used car
selection. Ample parking space.
Chelsea Implement Co. GR 5-5011. 164f

GAMBLES

Rental Equipment

FLOOR SANDER
FLOOR EDGER
FLOOR POLISHER
HAND SANDERS
(Oscillating type)
WALLPAPER STEAMER

Rent this new, modern equipment
by hour or day.

GAMBLES

110 N. Main St.
Phone Chelsea GR 9-2811 44f

FABRICON WEAVING—Repair
burns, moth holes, cuts, tears.
Save that garment. Reasonable
prices. 314 East street. Phone
GR 9-4072. 154f

FORTY-FIVE cents will protect a
man's or lady's suit from moth
damage for 5 years. One spray-
ing of BERLOU Guaranteed-Moth-
spray does it, or BERLOU pays
the damage. Merkel Bros. -20

MAJOR LIVESTOCK feed com-
pany needs a salesman in Wash-
ington county. For confidential in-
terview write John Balchick, Al-
bion, R. 3. Phone Springfield OL
7-5201. -20

Real Estate For Sale

2 bedroom home on 1 acre in Che-
lsea. \$2500.00 down. -144f

3 Bedroom Ranch type home, new.

4 Bedroom home: New roof, alumi-
num windows and doors, garage,
glassed in porch.

Also 3 room and bath apt. for
rent with garage.

Kern Real Estate

GR 9-7681 124f

MUST SELL—Singer zig zag
equipped sewing machine in
beautiful condition. With do fancy
stitching, overcasting, buttonholes,
etc. Pick up payments of \$5.00
per month or pay total balance,
\$42.00. Write Box AP22, care of
Chelsea Standard. -20

FARM LOANS!

Buy land, livestock, refinance.
Free Appraisals - Fast Service

LAND BANK

ROBERT HALL, MGR.
2221 Jackson Ave.
Ann Arbor, Mich.
Telephone NORMANDY 5-8139 244f

CLOGGED
SEWERReynolds Sewer
Service

We Clean Sewers Without Digging
Drains Cleaned Electrically
FREE ESTIMATES
Phone Ann Arbor NO 2-5277
"Sewer Cleaning is Our Business—
Not a Sideshow" 884f

RESERVE MONDAY evening,
Nov. 21, for Chelsea Rod and
Gun club showing of Russ Potter's
Flight to the Soviet at Chelsea
High school auditorium. -20

SEE "Flight to the Soviet," all-
color film report of people in
Russia today. Chelsea High school
auditorium Monday, Nov. 21. Spon-
sored by Chelsea Rod and Gun
club. -20

WANT ADS

FOR SALE—60-acre farm at 2180
Sharon Hollow Rd., just off
Grass Lake Rd. All modern 4-bed-
room home. Hardwood floors.
Beautiful fireplace. Nice location.
Immediate possession. \$15,500. In
Chelsea School District. Phone
Grass Lake 4846 or, days GR
5-4802. 174f

FOOD TRACTORS and equipment.
Also New Holland machinery.
Sales and service. Cobb & Schaefer,
Stockbridge. Phone Ulysses 1-4828.
414f

USED CAR SALE

ALL PRICES MARKED DOWN
This is the third week of our No-
vember Clearance Sale. Because
of the success of the previous two
weeks, we are continuing to offer
substantial savings, not only on
those cars left, but also these sav-
ings are being extended to several
other fine cars just taken in on
trade. Here are but 11 of the 20
A-1 cars remaining.

56 MERCURY 2-Dr. Hardtop.
Priced at wholesale. Now \$895.00
Was \$1795.00. -20

56 BUICK 2-Dr. Hardtop.
Good tires and new exhaust.
Was \$995.00. Now \$795.00. -20

55 OLDS 2-Dr. Hardtop.
No rust and good tires.
Was \$845.00. Now \$695.00. -20

59 RAMBLER 2-Dr. Wagon.
Safe for children and economic
to operate.
Was \$1595. Now \$1395. -20

56 FORD 2-Dr. Sedan.
A real clean one-owner car.
Was \$745. Now \$595. -20

57 CHEVROLET 2-Dr. Hardtop.
Immaculate inside and out.
Only 30,000 miles.
Was \$1195. Now \$1095. -20

52 FORD 4-Dr. Sedan.
A good transportation car.
Was \$995. Now \$195. -20

60 FORD Starliner Hardtop.
Save \$1,000 on this one.
Was \$3,269.94. Now \$2,269. -20

57 FORD STATION WAGON.
Red and White. Very clean
with an automatic transmission.
Was \$1095. Now \$995. -20

58 FORD 4-Dr. Sedan.
A one-owner car that's like new.
Was \$1395. Now \$1295. -20

59 FORD ANGLIA 2-Dr.
40 miles to the gallon with this
compact. Was \$1095. Now \$950. -20

If you don't see what you are
looking for—give us a call—be-
cause space did not permit us to
list all of the cars in stock plus
several cars and pick-ups which
are coming in on trade within the
next two weeks.

Palmer Motor Sales,
Inc.

Chelsea GR 5-3281. -20

PAINTING, paper hanging and
carpet work. C. C. Hopper.
Phone days, GR 5-5581, evenings
Gregory ALPINE 6-2148. 444f

FOR RENT—Nicely furnished apt.
overlooking Cavanaugh Lake.
Tile bath, built-in tub and shower.
857 Cavanaugh Lake. Reasonable. -20

MARY WOLTER
REAL ESTATE

7421 Portage Lake Rd.
(Near N. Territorial Rd.)
Dexter HA 6-8188

North Lake branch office
14034 N. Territorial Rd.
Chelsea, GR 5-3241

Gregory, AL 6-2307

Pinekey branch office
132 W. Main (M-36)
UP 8-3130

DEXTER—3 bedroom home, large
lot. 7560 Forest, Open Sun. 2:00
to 5:00. Reduced price, \$25,000.

CHELSEA, 520 Arthur—3 bed-
room, tile bath, carpeted living
room, oil hot water heat, fenced
back yard. \$19,500 with \$500 down,
no closing cost.

NORTH LAKE privilege—2 bed-
room home on 2 lots. Fireplace,
screened porch, oil furnace, part
basement. \$11,500 terms.

JOSLIN LAKE—Front lot 80x500.
Needs no fill. \$3000 and \$500 dn.

OLD US-12 building sites, 208x208
and \$1800 low dn. payment.

N. TERRITORIAL RD. at M-92
building site 208x208. \$1200,
terms.

PORTAGE LAKE—Front—4 bed-
room, garage and guest house;
96 ft. lake front. 2 level, well built,
fireplace, furnished. Just reduced
for quick sale.

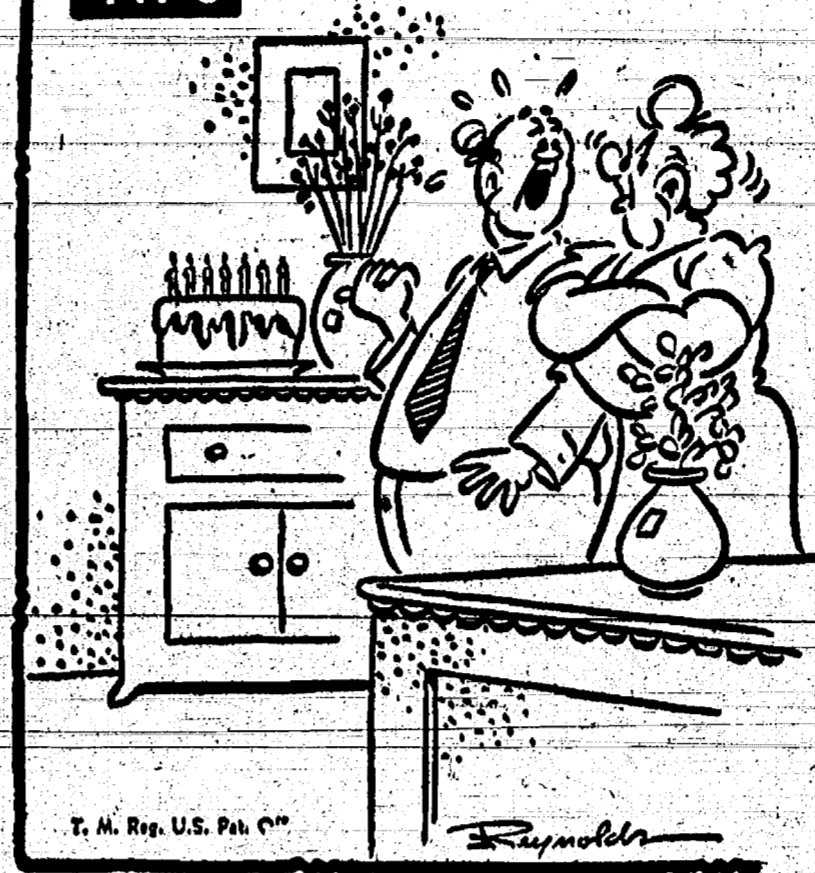
DEXTER-PINEKEY RD.—1 acre
with garage, well, septic. \$400 dn.

PORTAGE LAKE—On canal. New
8 bedroom brick. Built-in cooking
units, large rooms, attached gar-
age. \$16,000, terms. -20

FOR RENT—Partially furnished
upstairs apartment, 3 rooms and
bath. Heat furnished. Phone GR
9-3444 after 6 p.m. -154f

APPLS FOR SALE—18 varieties.
Bring containers. No Sunday
sales. E. Heininger, 2571 N. Lima
Center Rd., Phone GR 9-7810. 184f

TIPS



"Hey! That bakery in the Standard Want Ads cheated
you—there's only 31 candles on your cake!"

WANT ADS

REAL ESTATE

2-bedroom house. All aluminum
storms and screens. Several out-
buildings. On 5 acres, mostly front-
age on blacktop. Tractor and some
small tools included.

5-bedroom home 6 miles out on
nearly 5 acres land. Beautiful
country home. Deep well. New oil
furnace.

In Chelsea, newly remodeled 3-
bedroom home. New gas furnace.
Large lot.

Large brick home near downtown.

MINNIE SCRIPTER, BROKER
Chelsea Phone GR 9-2789
If no answer call GR 5-4311 194f

FOR RENT—2-bedroom home in
the country. Oil heat. Adults pre-
ferred. Phone GR 9-4328. -20

FOR SALE—'53 Pontiac hardtop.
Radio, heater, automatic. No rust.
Phone GR 9-2074 after 5 p.m. 164f

APARTMENT FOR RENT—First
floor. Stove, refrigerator and
heat furnished. Phone GR 9-1891. 194f

CUSTOM SLIP COVER work. You
furnish material, we furnish la-
bor. Rose Young, Gregory, ALPINE
6-2445. -20

Frigidaire - Norge
APPLIANCES

Washers - Dryers - Ranges
Freezers - Refrigerators
Built-in Kitchen Units

ZENITH

TV - Radios - Hi-Fi

FLOOR COVERING

Complete Household Furnishings

MEABON'S
TV, Furn. & Appl.

105 N. Main Phone GR 5-5191 144f

HOUSE FOR SALE—3-apartment
house with 2-car garage, full
basement, good location, close to
churches, schools and downtown.
For appointment to see phone GR
9-3291. 614f

WOULD LIKE 1 or 2 more steady
ironings, odd ironings and shirts.
Also baby sitting evenings. Clara
Wellhoff, 758 South Main St. Ph.
GR 9-2681. -20

- FOR SALE -

FIVE-ROOM HOUSE, 3 miles out. Oil furnace, 2-car
garage, about 3-acre lot. Price \$8,500, \$1,500 down.

220-ACRE FARM—Well located. Good buildings.
Price, \$38,500.

TWO BEDROOM MODERN COUNTRY HOME—Fire-
place, full basement with recreation room, oil fur-
nace, corner lot, garden spot. \$12,500. Reasonable
down payment.

119-ACRE DAIRY FARM. 4-bedroom house. 76-foot
hip-roof barn. Large silo. Attached milk house.
Bargain at \$18,500.

NEAR MUNITH. 30-acre farm. Modern 2-bedroom
house. Barn and chicken house. \$8,500 cash.

CAVANAUGH LAKE modern, 6 rooms. Pine-paneled
living room, large enclosed porch overlooking lake,
full basement, recreation room, oil furnace, garage,
excellent beach and lot, road in back. Priced for
quick sale, \$15,000. Part down.

List your real estate with R. D. Miller
for fast, efficient service.

HAVE BUYERS FOR CHELSEA HOMES.

R. D. MILLER

REAL ESTATE BROKER

Office: 15775 Cavanaugh Lake Road

Post Office Box 388 Chelsea, Michigan

Phone: GR 9-5892

WANT ADS

Grave Blankets - \$5 up

Evergreen Wreaths \$2.50 up

Cemetery Vases \$2 up

OTHER ASSORTED GREENS

Chelsea Greenhouse

PHONE GR 9-0071 25

SAND - GRAVEL

STONE - FILL DIRT

Baseament Digging - Bulldozing

Crane Work - Beach Building

FREE ESTIMATES

BOB FITZSIMMONS

North Lake

Phone Chelsea GR 9-5701 884f

SEE OUR CHRISTMAS display of

Avon products and shop at home.

Call Ruth Wilkerson, GR 5-5747. 21

FOR SALE—'52 convertible Ford.

In fair condition. \$150. Call GR 5-7241. -20

Grinder Set-Up

EXPERIENCED on the following

grinding machines:

Blanchard Rotary Surface

Barnes Verticle-Hone

Cincinnati Centerless

Bryant Hole and Face

Norton O. D.

Must be able to read blueprints

and precision measuring instru-

ments.

Phone Ypsilanti HU 3-4461

or apply at

Gar Wood Industries

PUMP DIVISION

800 LOWELL YPSILANTI

SWING NEEDLE sewing machine

in modern wood console. Sews on

buttons, makes buttonholes and

hundreds of decorative stitches

without using attachments. Yours

for \$66 balance or assume pay-

ments of \$2.00 per month. Will

take older machine in trade. Write

Box AP 22, care of Chelsea Stand-
ard. -20

FOR RENT—Modern 3-room

apartment. Full basement. Pre-

ferred middle age or elderly tenants.

Mrs. Harvey Proctor, Manchester,
Phone GR 9-5592. -20

Why Take A Chance?

Let us revive the beauty of your

rugs, carpets, furniture. Our

method is endorsed by leading

weavers and manufacturers. Free

estimates. Satisfaction guaranteed.

Modern Rug
& Upholstery Cleaners

Phone GR 5-8186 804f

Clean Your Own Rugs

With Our Amazing Rug Cleaner.

Rental charge, \$6.00 per day.

FRIGID PRODUCTS

Phone GR 9-6661 44f

WANTED—Employed family with

trailer to help with chores on

farm close to Chelsea. Write Box

NO 17, care of Chelsea Standard. -21

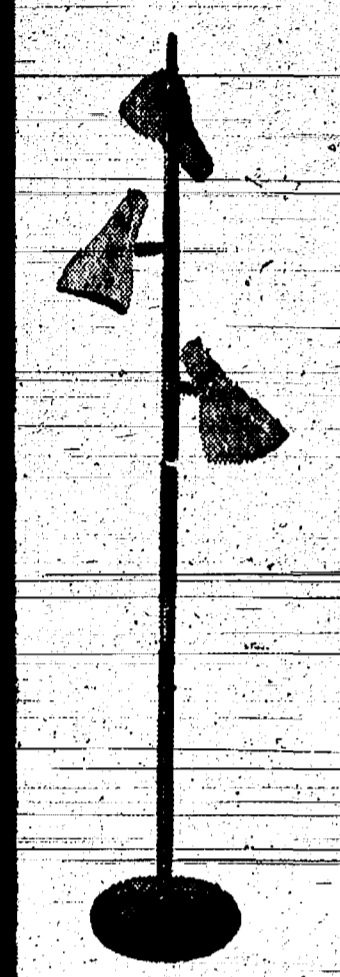
LANDRACE BOAR—Service age.

County Hospital News

The semi-annual Open House of the Washtenaw County Hospital was held Oct. 19 at the hospital. Dr. Edwin Smith of the University of Michigan department of Physical Medicine and Rehabilitation gave an interesting talk on "The Art of Living with Disability." He discussed the importance of living with a disability and the role of the hospital in providing care. Dr. Smith also discussed the importance of the patient's role in their own care and the importance of the family in providing support.

Corpses have been much in evidence recently. Mrs. Eleanor Haywood, Mrs. Martha Robertson and Mrs. Ethel Johns have visited the hospital to instruct a group of residents in their construction. Fall flowers, ribbon, and tape were brought and the resulting corsages were worn to the October birthday party. This party was given Oct. 24 by the Woman's Club of Chelsea.

LIGHTOWER TREE LAMP



BEAUTIFUL FUNCTIONAL



6 fashion colors



A SMALL DEPOSIT WILL HOLD YOUR SELECTION FOR HOLIDAY DELIVERY

HERKEL BROS. BEAUTIFUL HOME FURNISHINGS

Leave Christmas Trees Growing On State Lands

Lansing—Deer hunters, spare those Christmas trees on state lands—remove not a single bough. The warning to those who may be tempted to cut down a tree, pine, balsam, or spruce trees would look in their living rooms during the holidays, is backed by law. Persons caught cutting or removing trees from state lands may be charged with trespassing and stand liable, pending court action, to not more than \$100 in fines or 30 days in jail if their damages are less than \$200. If damages run higher, fines of not less than \$100 nor more than \$500 or two-year jail sentences may be imposed again pending court action.

In some cases violators may be liable to three times the cost of their damages. Hunters desiring to take trees home from private lands must observe another law. They must receive permission from landowners. When more than six trees are involved, each person must obtain and carry a bill of sale signed by the property owner.

Hunters Ball Proceeds To Buy New Flags For American Legion

Approximately 50 couples attended a "hunters ball" Saturday evening at the American Legion Home at Cavanaugh Lake. Sponsored by Herbert J. McKune Unit No. 31, it was pointed out by Commander William Blesch that this was "the first of a series of parties following the pattern of old time social events of the Legion." Door prize winners were Ralph Guenther, who received a deer rifle, and Mrs. Charles Smith, Jr., whose prize was a woolen shirt suitable for hunting wear.

Proceeds of the affair have been designated to be used for the purchase of a new 60-star American flag, a new Legion Post flag and aluminum flagpoles for use when the flags are carried in parades, etc.

Keith Boylan was general chairman of the party.

THANK YOU I want my Chelsea friends to know how much I appreciate hearing from them during my illness. Many thanks for the telephone calls and other remembrances and for the beautiful cards I received. Sincerely, Myrtle Price.

CARD OF THANKS

With deepest gratitude we extend this word of thanks for the many kind acts of sympathy expressed by thoughtful friends during our recent bereavement. Special thanks to the Rev. Philip Rusten and to Mr. and Mrs. Louis Burghardt. Family of Rex Miller

THANK YOU

Many thanks to my friends, neighbors and relatives for the nice cards, flowers, gifts and telephone calls during my stay at the hospital; also, the Rev. Harry Pyscher for visiting me and Mr. and Mrs. George Welch for caring for my daughter at their home. Mrs. Clyde Martin

THANK YOU

I wish to thank my friends and neighbors for their thoughtfulness and kindness while I was in the hospital and during my home convalescence. A special thanks is extended to the Chelsea Blood Bank. The cards, flowers, and visits are sincerely appreciated. Mrs. Max Hoppe.

SUBSCRIBE TODAY TO THE CHELSEA STANDARD!

Our Bonus—Extra Years

We have a bonus today—extra years of life that everyone may enjoy. Better living conditions, improved sanitation and health measures have helped us add years to our lives. Greatly improved medicines and better hospital care have contributed toward those extra years.

You can get an extra bonus—from your own efforts. You can add years of abundant, healthy, enjoyable life, through your care of the health you have today.

Regular visits to your physician, and faithful attention to his suggestions are important elements of this care. The use of the medicine he prescribes, compounded in a Pharmacy such as ours, will help you get those extra years—your health bonus.



BOY SCOUT NEWS

TROOP 25 Boy Scouts of Troop 25 will hold a Court of Honor at 8:15 p.m. Monday, Nov. 14, at the Congregational church.

There will be a family pot-luck supper before the awards are made. Gary Hopkins, scribe.

TROOP 78 At our meeting we played a game taking advantage of our senses of hearing, smelling, and seeing.

We discussed what we should do for some new Webelos coming into the troop. Gary White, scribe.

Labor day in the United States was first celebrated by the Knights of Labor in 1882. It was made a legal holiday by Congress in 1894.

Chelsea Theatre

CHELSEA, MICHIGAN THURS.-FRI.-SAT. NOV. 17-18-19

The Sweep of Mighty Adventure!



Shows at 7:00-9:10 p.m.

SUN.-MON. NOV. 20-21

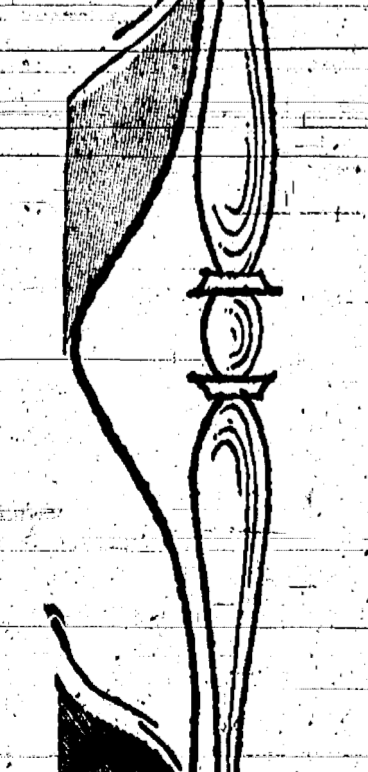


NEWS • SHORT • CARTOON

Matinee Sunday 3:00 p.m. Cont.

6 fashion colors

\$21.50



A SMALL DEPOSIT WILL HOLD YOUR SELECTION FOR HOLIDAY DELIVERY

HERKEL BROS. BEAUTIFUL HOME FURNISHINGS

Eagle Scout . . .

(Continued from page one)

J. Smith, the Rev. Paul M. Schnake, and the Rev. Philip Rusten. Pierson spoke briefly on the topic "Spirit of Scouting" and then turned over the remainder of the program to Scoutmaster Robert Foye who presided during the Court of Honor proceedings.

There were 100 exhibitors of Tenderfoot awards to nine boys by Robert Shears. The nine who received the awards are: Norwood Bush, Larry Porath, Robert Wood, Russell Maurer, Kim Flint, off, Philip Eckhardt, Mike Worden and Chris and James Wagner.

Second class Scout awards presented by the Rev. Philip Rusten, went to John Lyons, Eugene Morley, Ron Smith and Lauren Boyer.

A total of 28 merit badges were presented by Scoutmaster to eight Scouts—Victor Parks, Curtis Farley, Roy Lange, Ron Smith, James Perry, Tom Penhalegon, Don Dickelman and Ed Windell.

Penhalegon made the presentation of the next highest award, Star Scout, to Roy Lange, handing the award to the honored Scout's mother, Mrs. Douglas Lange, who, in turn, presented it to her son.

Under the direction of Star Scout Lange, the boys of the Buffalo Patrol, presented to their mothers, miniature pins of their own ranks. They had paid for the pins with money earned themselves by working together as a patrol.

Douglas Lange made the presentation of Life Scout badge to Curtis Farley and congratulated him on his work with the troop and the highlight of the evening followed—presentation of the Eagle Scout award to Victor Parks.

Scoutmaster Foye concluded the program by thanking all who had a part in making the Court of Honor a success and commending David Talbot for the work he did with the nine new boys, helping them to fulfill the necessary requirements to achieve Tenderfoot rank.

Only 3.9 per cent of the library systems in the country have budgets of \$100,000 or more. Nine states do not have a single library system with a budget of that size. In Michigan, only 24 of 317 public libraries reach that mark.

SUBSCRIBE TODAY TO THE CHELSEA STANDARD!

All Golden Wedding Couples In County Invited to Party

The Senior Citizens' Arts and Crafts Show, being held all this week at the Senior Citizens' Guild, 323 Packard St., Ann Arbor, attracted more than 100 people for its opening day activities on Sunday.

The show, open to the public free of charge, will be concluded Sunday, Nov. 20, with a special program at 8 p.m. honoring all couples of the county married 50 years or more who are present for a special golden wedding anniversary program.

A three-tiered wedding cake will be served, along with punch; each "bride" will be presented with an orchid and each "bridegroom" will receive a boutonniere. A special musical program will provide entertainment.

A total of 45 couples married 50 years or more were located by committees and invited to attend Sunday's celebration; however, the committees fear they might have missed some couples and emphasize that all couples in the county, married 50 years or more, are urged to attend Sunday's party in their honor.

More than 100 exhibits of basket weaving, candlemaking, ceramics, copper and metal crafts, painting, rug-making and many other items, all made by persons 60 years old or more, are on display. The show is open daily from 2 p.m. until 9 p.m.

The show is sponsored by the

Ann Arbor-Ypsilanti Altruistic International with the co-operation of the Ann Arbor Recreation Department; Bureau of Community Services—Committee on Aging; Council of Churches, Ann Arbor and Washtenaw; and Washtenaw County Co-operative Extension Service.

Exhibits were judged for first, second and third place awards but no prizes are being offered. The purpose of the show is to encourage "senior citizens" to keep busy at hobbies while, at the same time, making useful and decorative articles. Judges included H. S. Orler, a former Washtenaw county agricultural extension agent; also Prof. Carleton Angell, Dr. Wilma Donahue, Mrs. Capitola Hutchinson, Mrs. Volney Jones, Mrs. Alice Mullenchay, Miss Thelma McAndrew, Mrs. James Plumer and Mrs. Leo Rollins, all of the Ann Arbor area.

As the result of interest expressed during the Senior Citizen's Show this week, plans are already being discussed for an "All-Men's Senior Citizens' Hobby Show" to be held next spring. It would be the first such show ever held in the United States.

The Ohio River is nearly 1,000 miles in length, is 1,500 feet in width in several places and contains numerous islands.

The show is sponsored by the

STOCKBRIDGE INN

WE INVITE YOU TO ENJOY OUR RELISH TABLE WITH ALL DINNERS

OUR SPECIALTY IS STEAK FROM OUR GRILLE

This is flavor-fed beef from Story Book Farm. It is locally raised and prepared for shipment to all parts of the United States. The cattle are corn fed and no chemicals or hormones are added to their diet. This beef may be bought for your home freezer, cut to order, and we can furnish you with full information.

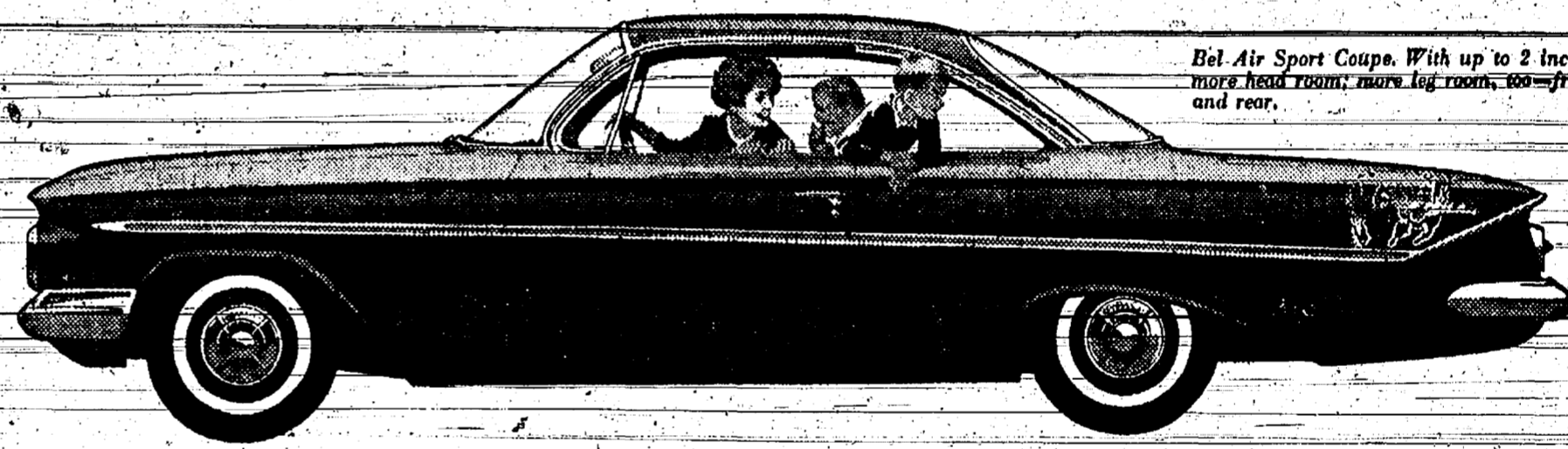
10% off on all service checks of \$5 or more

WE ALSO CATER TO PRIVATE PARTIES, CLUBS, ETC.

DAN SEXTON, Proprietor

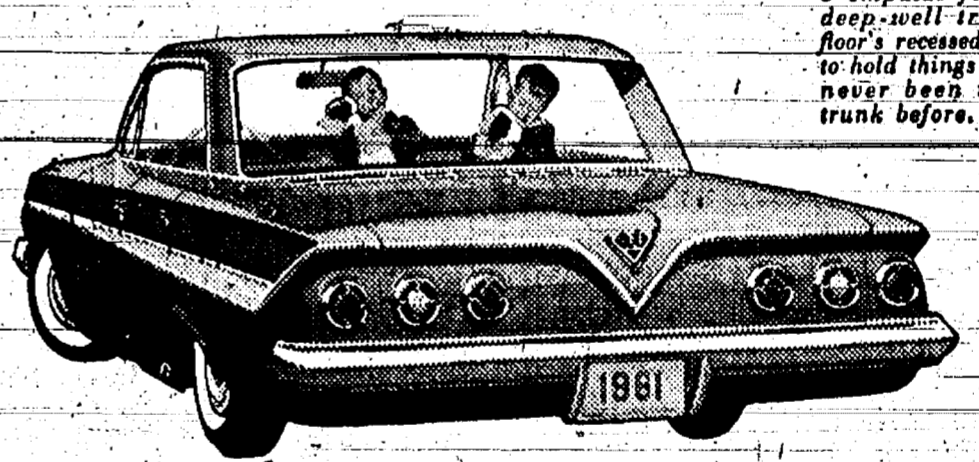
Phone Ulysses 1-2763

NOW! THE GREATEST SHOW ON WORTH!

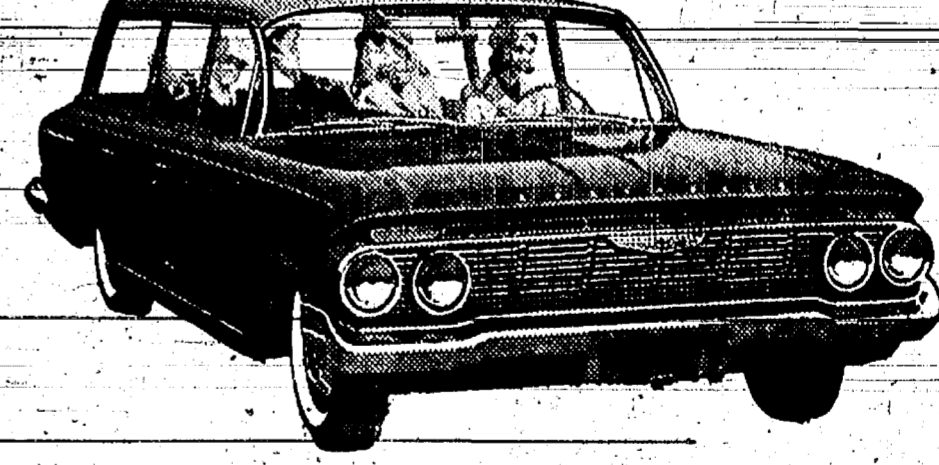


Bel Air Sport Coupe. With up to 2 inches more head room, more leg room, too—front and rear.

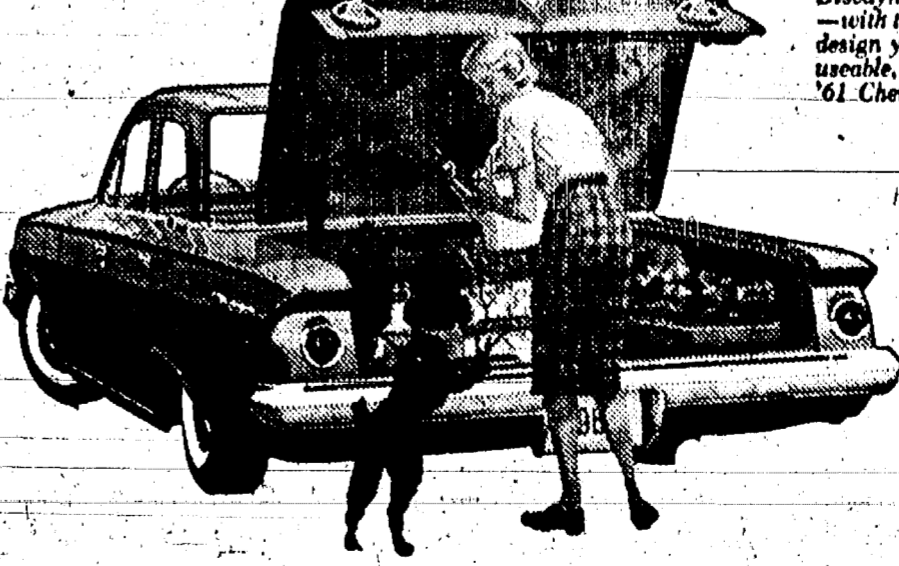
NEW-SIZE YOU-SIZE SIXTY-ONE DEDERFUL CHEVY



Impala Sport Sedan. All 5 Impalas feature the deep-well trunk—the floor's recessed a full 7" to hold things that have never been inside a trunk before.



Brookwood 3-Door Passenger Station Wagon. One of 6 for '61. Each features a cave-size cargo opening nearly 5 feet across and a new concealed compartment under the floor.



Biscayne 4-Door Sedan—with the same sensible design you get in all the useable, liveable, likable '61 Chevies.

No needless bulk or overhang here. This '61 Chevy is built on the principle that the place you want space is inside. We put it there, too. Actually trimmed the outer size to give you extra inches of clearance for parking and maneuvering, and still worked wonders with inner space. Door openings are as much as 6 inches wider. Seats are as much as 14% higher. We've thought of everything. Increased rear foot room by slenderizing the driveshaft tunnel. Worked in sensible new ideas all the way back through that huge bin of a baggage compartment. See how thoughtful this one is! Full of good new things. Full of good old things, too, like Chevy's well-known thrift and dependability. The new '61's at your Chevrolet dealer's right now.

- * For big-car comfort at small-car prices *
- * '61 CHEVY BISCAYNE 6 *
- * The lowest priced full-sized Chevy! *
- * Look over the '61 Biscaynes—6 or V8. *
- * They give you a full measure of Chevrolet quality and comfort—yet they're *
- * priced right down with many cars that *
- * give you a lot less!

See the new Chevrolet cars, Chevy Corvairs, and the new Corvette at your local authorized Chevrolet dealer's

SPAULDING CHEVROLET SALES & SERVICE

CHELSEA, MICHIGAN

CHELSEA DRUG
C.M. Lancaster—Reg. Pharmacist
Call GR 5-4411 for Free Delivery
"Four Registered Pharmacists Available 24 Hours a Day"

Community Calendar

Merry Maids 4-H club Wednesday, Nov. 30, 4 p.m., at the Junior High school.

Special Convocation, RAM, Royal Arch degrees, postponed until Dec. 8.

Chelsea Girl Scout Neighborhood meeting, Monday, Nov. 28, 8 p.m., Junior High school home economics room. Kay Kimball, director, Huron Valley Girl Scout Council, will be present.

Ann Arbor Chapter, National Association of Accountants, dinner meeting Thursday, Nov. 17, at the Elks club, Ann Arbor. Program: "Cyclical vs. Annual Inventories," to be presented by members: Dean C. Burkhardt, controller, Hoover Bearing Division, Hoover Ball & Bearing Company, and Leslie F. Schwaback, Manufacturing Superintendent, Argus Cameras Division of Sylvania Electric Products, Inc.

McKune Memorial Library will be closed 7-9 p.m. Thanksgiving Eve, Nov. 23.

Chelsea Promenaders Saturday, Nov. 10, 8:30-11:30 p.m. at South Elementary school.

PNG club Thursday, Nov. 17, 7:30 p.m., at the home of Mrs. M. L. Dietle. Co-hostess: Mrs. Anna McDonald.

St. Barnabas Church Women, Thursday, Nov. 17, 7:45 p.m. at the home of the Rev. and Mrs. Allan Reed. Program: Colored Slides of Tokyo and St. Margaret Episcopal Mission by Miss Alice Bano.

Crooked people are quick to suspect other individuals.



Cub Scout Pack meeting Thursday, Nov. 17, 7 p.m. (tonight) at South school. Note that date is one week early because of Thanksgiving.

Conservation Dept. Wants Report on Area Deer Kills

Jackson-Hunters killing buck deer near Chelsea in Washtenaw county or elsewhere in southern Michigan are urged to phone the Conservation Department.

The hunter can telephone his report collect to Department Offices at Brighton AC 9-0500, Jackson ST 4-3188, or evenings and weekends Pinckney UP 8-9983. A game biologist will go to the hunter's residence or frozen food locker, determine the age of the deer by the amount of wear on the teeth, and measure its antlers and record the weight. Even if only the head remains he can still obtain the necessary information.

"We need to examine 500 southern Michigan buck deer this fall," states Ralph Bailey, district game supervisor. "We are now engaged in an intensive study to secure information vital to the management of the southern Michigan deer herd."

With the high productivity of two fawns from each doe, the herd should be increasing at a faster rate.

First of all, we need to know how many bucks are being shot and how many bucks of each age class are being removed by the hunter. This will be followed around the year by a careful tally of all other causes of mortality including dogs, cars, fences, farm machinery, etc."



TRAFFIC VICTIM—Conservation Officer Donley Boyer is shown dressing out the 12th deer killed in this area since Oct. 20 in deer-auto collisions. Needy families in the vicinity were given the tender venison from the 75-lb. doe. The animal had jumped in front of a car driven by Elmer Wenk of Ann Arbor, while he was driving on North Territorial Rd., near Island Lake Rd., at 8 a.m. Saturday. Venison salvaged from other deer during the past three weeks had been given to the Washtenaw County Jail and to the Methodist Home. A few days earlier a 90-lb. buck was found killed by a car on US-12 near Pierce Rd. Conservation Officer Boyer said he found the animal by accident shortly after it was killed but there had been no report made by the motorist who struck it. The salvaged meat from that deer was also distributed among needy area families.

Farm Bureau Group Urges Toll-Free Dexter Area Calls

Chelsea Community Farm Bureau, with 20 families represented, met Friday night at the home of Mr. and Mrs. J. V. Burg. Hosts and hostesses for the evening which included a potluck supper, were Mr. and Mrs. Oscar Kaimbach and Mr. and Mrs. Leon Sanderson. Reuben Lesser, the chairman, presided at the business session during which Calvin Clark gave a report of the state Farm Bureau convention he had attended. Everett Van Riper was named chairman of a delegation of members to attend a Dexter Chamber

of Commerce meeting Tuesday evening, Nov. 22, in the interest of promoting toll-free telephone service between Dexter and Chelsea. The meeting is open to anyone interested and it has been announced that N. J. Prakken, manager of the Ann Arbor Division of Michigan Bell Telephone Co., will be present to explain results of a survey made during the past 30 days in connection with the request for toll-free service between the two communities.

Chelsea Community Farm Bureau decided at Friday's meeting that instead of exchanging Christmas gifts at the December meeting, the group would give something for a needy family.

Entertainment following the business session was provided by Anton Nielsen who showed pictures taken on a recent European trip.

BIRTHS

A son, Joseph Daniel, Monday, Nov. 7, at U. of M. Women's Hospital, Ann Arbor, to Mr. and Mrs. Dan Ewald, 802 Flanders St.

A daughter, Shannon Renee, Friday, Oct. 7, at Presbyterian Hospital, Whittier, Calif., to Mr. and Mrs. Raymond Gimney, of 611 E. Short St., Whittier, Calif. The baby's birth occurred on her father's birthday. He is a son of Mr. and Mrs. Ray C. Gimney of Chelsea; Mrs. Gimney is the former Rose Ann Ball of Chelsea, daughter of Mrs. Rose Ball of Dexter.

A daughter, Cheryl Lynn, Wednesday, Nov. 9, at Jackson Osteopathic hospital, to Mr. and Mrs. Clifford LaRoe, 8250 Kaimbach Rd., Grass Lake.

A son, David Joseph, Friday, Nov. 11, to Mr. and Mrs. Donald G. Boham.

A son, Monday, Nov. 14, at a Hammond, Ind., hospital, to Mr. and Mrs. Thomas N. Bear of Lowell, Ind. Mrs. Bear is the former Cynthia Paul, daughter of Dr. and Mrs. L. J. Paul.

If it's a job for Bottled Gas IT'S A JOB FOR SHELLANE

Product of the Shell Oil Company

HILLTOP PLUMBING
BOB SHEARS
201 S. Main St. Ph. GR 5-7201

DEATHS

John A. Conlan

Life-Long Chelsea Resident Dies Tuesday Afternoon

John A. Conlan, a Chelsea area resident his entire lifetime, died Tuesday afternoon at his home, 815 West Middle St.

Born in Lyndon township, Aug. 29, 1876, he was a son of John and Mary Wheeler Conlan and on Oct. 18, 1904, at St. Mary's Catholic church here, was married to Katherine McGuire who survives.

Following their marriage, Mr. Conlan farmed for a few years before moving to Chelsea where they have made their home for more than 50 years.

For a number of years Mr. Conlan operated a dairy barn. Later, he was an insurance salesman and also was employed until his retirement, at Federal Screw Works.

He was a member of St. Mary's Catholic church and the Holy Name Society.

In addition to the widow, survivors include three daughters, Mrs. Paul Hoffman (Helen) Mrs. Armin Zinke (Greta), and Mrs. Harvey Lixey (Katherine); a sister, Mrs. Eugene McKernan; eight grandchildren and four great-grandchildren.

A son, Paul, died in December, 1947.

Funeral services will be held at 9 a.m. tomorrow (Friday) at St. Mary's church with the Rev. Fr. Leo J. Smith officiating. Burial will take place at Mt. Olivet cemetery.

The Rosary will be recited at 8 o'clock this evening at the Staffan Funeral Home.

Rex B. Miller

Dies Early Thursday at Ann Arbor Hospital

Rex B. Miller died early Thursday at St. Joseph Mercy hospital, Ann Arbor where he had been a patient for two days. He had been in poor health for several years but had continued his work as a linotype operator with the Ann Arbor Press. He had been a pneumonia patient at the hospital for four days last month.

From 1941 until 1948 he was employed as a linotype operator for The Chelsea Standard.

He was 70 years old.

Born March 16, 1890, at Union City, he was a son of A. J. and Florence Maxwell Miller and was married Dec. 30, 1923, at Chicago, Ill., to Cora Lee McMillan. They lived in Chicago until coming to Chelsea in 1941.

Mr. Miller was a member of the Fraternity Order of Eagles, Ann Arbor Lodge, and of the International Typographical Union.

He is survived by his widow; two step-daughters, Mrs. Edwin (Greta) Dickinson of Chelsea and Mrs. G. W. (Lillian) Graham of Hot Springs, Ark.; and seven grandchildren and one great-grandchild.

Funeral services were held at 2 p.m. Saturday in the Burghardt Funeral Home, with the Rev. Philip Rusten officiating.

Burial took place at Vermont cemetery.

Mrs. Lena M. Potter

Former-Detroit Dies Tuesday at Methodist Home

Mrs. Lena M. Potter, a resident of the Methodist Home since coming here from Detroit, April 17, 1952, died at the Home Tuesday following a long illness. She was 84 years old.

She was the widow of James H. Potter who died at Detroit April 5, 1934.

Mrs. Potter had been a member of Methodist churches for 58 years and was a member of the Henderson Memorial Methodist church of Detroit since it was founded 30 years ago.

Born April 8, 1876, at Whitby, Ontario, Canada, she was a daughter of Albert and Mary Lambkin Wheeler. She and Mr. Potter were married Oct. 27, 1897.

Included among several nieces and nephews who survive is Mrs. Arthur Patton of Munich. Also surviving is a cousin, Mrs. John Kenyon of Detroit.

The body was at the Burghardt Funeral Home until this morning. Funeral services are being held at the Methodist Home chapel at 10 a.m. and burial will follow at Forest Lawn cemetery, Detroit.

Clergymen who will officiate are the Rev. George P. Stanford, chaplain of the Methodist Home, and the Rev. Lynn Hodgson of the Henderson Memorial Methodist church, Detroit.

PERSONALS

Mr. and Mrs. Walter Schrader, Jr., their son, Mike, and Mary Jane Harris spent Friday and Saturday at Great Lakes, Ill., and attended graduation ceremonies at Great Lakes Naval Training Center Saturday.

The Schraders' son, Larry, was one of the graduates. He arrived home Tuesday for a 15-day leave and is to return to Great Lakes Training Center where he has a school assignment.

Mrs. Carl Swikerath left Tuesday by plane from Willow Run to visit relatives and friends at Providence, R. I., and Fall River and Boston, Mass., before going to the home of her son and daughter-in-law, Capt. and Mrs. Carl H. Swikerath at Rockville, Md., to spend Thanksgiving. Captain Swikerath's work for the U. S. Government is now centered at Washington, D. C.

The Hoosac railway tunnel through the Hoosac mountains in Massachusetts is nearly five miles

Champion Woman Bowler To Appear at Chelsea Lanes

LaVerne Carter, Brunswick bowling star and 1959 national doubles co-champion who will appear at Chelsea Lanes on Saturday, Nov. 19, if she had never won a bowling title would have to be regarded as the "housewives' champion."

LaVerne, however, has won many bowling titles. She was WIBC all events champion a few seasons back. She has often made the mythical all-star teams. For 1952-53, LaVerne was California's Bowler of the Year.

LaVerne is the "housewives' champion" because her bowling is secondary to being the wife of Don

Carter and the mother of a daughter and a son.

In her avocation, LaVerne played 194 during the 1956-57 season in St. Louis which was the son's high average among St. Louis lady bowlers.

LaVerne also managed to play 700 series in league play that included a 279 game. In many play, she rolled the first 200 of her career while on the way to St. Louis women's match title.

All of these records are more spectacular, since she is a housewife. She had been out of action since the 1954-55 season awaiting the birth of young Don Carter, Jr.

LaVerne, who is making an appearance at Chelsea Lanes a member of the Brunswick Bowling Staff, will offer special women bowlers during her Saturday, Nov. 19 exhibition.

Mr. and Mrs. Keith Boyla and children were Sunday dinner guests of Mr. and Mrs. James Yost. Their home in Detroit. They were accompanied home by Mrs. Betty Forner who had spent the week with the Yosts and on Saturday, with Mrs. Yost and daughters, Laura and Linda, attended the ice-foes.

Robert Freysinger was taken to Foote hospital, Jackson, early Saturday after becoming suddenly ill in his home here.

It is expected that between 10,000 and 15,000 dancers from all parts of the U. S. and Canada will attend the national convention, provisions are also being made so that 5,000 to 10,000 spectators may observe the colorful event.

Those from this vicinity who attended the state convention Saturday are Mr. and Mrs. Clarence Wood, Mr. and Mrs. William Collins, Mr. and Mrs. Laurence Boyer, Mr. and Mrs. N. H. Miles, Mr. and Mrs. William Hitchingham, Mr. and Mrs. Al Grammatico, Mr. and Mrs. Robert Schilling, Mr. and Mrs. Cecil Cobb of near Stockbridge, Mr. and Mrs. Ralph Anderson, Mr. and Mrs. Ralph Frisch and Mr. and Mrs. Ren Rutzel.

WINTERIZE YOUR CAR

Prestone - Zerec Mobil Anti-Freeze Thermostats FOOR'S MOBIL SERVICE

Detting's Marathon Service

Drive In now! Get The details on SMILE-maker SERVICE GUARANTEED To Satisfy You Or We Pay

Corner S. Main and Old US-12 Phone GR 5-7821

PROMPT CLEAN COAL DELIVERY

- ★ POCAHONTAS EGG
- ★ POCAHONTAS JR. EGG
- ★ BLUE ROSE EGG
- ★ BRIQUETS
- ★ BLUE ROSE STOKER

DIAL GR 5-3391

CHELSEA LUMBER CO.

PITTSBURGH PAINTS

any finish... any quantity... any color...

Walltime Semi Gloss Enamel PITTSBURGH MAESTRO WHITE TUNING PAINT

Chelsea Hardware
110 South Main St. Phone GR 9-6311

PITTSBURGH PAINTS keep that WHITE look longer

1960 MODEL CLEARANCE SALE

We were fortunate in making an unusual purchase of this 1960 AUTOMATIC TUNING GE TV

and are passing the savings along to you in this clearance sale!

DURING THIS SALE WE WILL ALLOW

Up to \$150⁰⁰ Trade-in for Your Old Set

- ★ Electronic Power Tuning With 4-way wireless control.
- ★ Custom Ultra-Vision Chassis 3 times the sensitivity for better fringe area reception.
- ★ Slim Silhouette Design Genuine mahogany veneer.
- ★ New Custom Coaxial Speaker System Front mounted 21"x9" bass peaker with high frequency electrostatic tweeter.

Other TV Specials Starting as Low as \$159⁵⁰

FRIGID PRODUCTS

113 N. Main L. R. Heydlauff Phone GR 9-6651

The Way the Ball Bounces

With Tom Johnston

Thanks to the many folks who have already called us or mentioned our "salute to the Champion" program last week Saturday, Chelsea High School was the featured team, and we talked with the coaches and some of the boys who helped to make the Bulldogs the conference champs for the last two seasons.

Michigan's football team has a good chance of beating Ohio State this week. The Wolverines didn't look good in the win against Indiana, but the regulars rested most of the afternoon, and should be ready to go against the Buckeyes in the traditional clash between the two schools. The Wolverines came out of the Indiana contest in good physical and mental shape, and the win this next Saturday would give them a fine 6 and 3 season's record.

Michigan's freshman team played their seasonal game last Friday afternoon, and from the looks of things, the Wolverines will be mighty tough when September of 1961 rolls around. After all, they have their entire backfield returning, as well as most of the key linemen, and a great big group of tough freshmen linemen.

Duffy's win over Northwestern Saturday rot the Spartan mentor off of the hot seat for another season. Detroit alumni had been yelling for his scalp, basing their attitude on the great material that State has had in the past few years.

Evy at Iowa will close out his career against Notre Dame this Saturday. Woo the winless Irish who must face Iowa as Evy closes out his coaching career.

Hillsdale will be one of two teams in the "Mineral Water Bowl" on Dec. 26. What won't they think of next?

The WCHA All-Area football team will be announced this Saturday at 9 a.m. Some of the team's members will also be interviewed at that time. The banquet will be held a few weeks.

Minnesota and Iowa are still the best football teams in the nation no matter what any poll might say. The caliber of competition is again the reason.

Basketball practice is underway, and the first conference games are scheduled Dec. 2.

It all depends on the fighter. Some like to lose their titles in the ring. Others like to retire before it's too late.

In 1937, Jimmy Braddock lost the heavyweight crown to Joe Louis. But that wasn't his last fight. The following year he met rugged Englishman Tommy Farr at Madison Square Garden in New York.

The one-time coal miner from Wales had gone the 15-round route with Louis and was the solid favorite to beat Braddock.

Farr also was impressive right from the opening bell. He stung Braddock with rights and followed with sharp lefts.

But despite his years, Braddock was still in top physical condition and as the fight went on he took everything that Farr had to offer.

In the middle rounds Braddock called on all the boxing skill of years of experience to keep Farr from doing any damage.

As Braddock returned to his corner after the eighth round he knew he trailed on points.

Braddock decided it was now or never. As the bell sounded for the ninth round Braddock was out into the center of the ring in a flash.

He uncorked a smashing right that caught Farr squarely on the jaw and it surprised the Englishman as much as it hurt him.

Farr stepped back and got ready for his own attack. But Braddock was on top of him again, hitting Farr with every punch in the book.

Braddock had found new strength and refused to let up as Farr backed away from the vicious attack.

The garden was in an uproar. The fans always loved Braddock and they stood and cheered as Jim gave his opponent a punishing.

Braddock couldn't floor Farr, but he gave him a terrible beating in the round.

The roar of the crowd was so deafening that the fighters could hardly hear the warning buzzer of bell for the 10th and final round.

Braddock and Farr came to the center of the ring, touched gloves and began fighting.

It was Braddock who carried the fight again. He hammered the Englishman with lefts and rights as the crowd screamed for a knockdown.

But he didn't get his knockdown. He did, however, pick up enough points to win the final two rounds and that was enough for the decision.

As Braddock left the ring the fans stood and cheered until he



SENIOR PLAY SET, CONSTRUCTION—Volunteers who assisted in the construction of stage sets for the Senior Class play, "Diary of Anne Frank," included high school teachers and parents of students. Present Wednesday night to work on the project were, from left, Edward Brown, John McGill, George Kleis, Kay Runciman, James LaGoe, Jack Musser, Dan Mayer, Alfred Mayer, School Superintendent Charles Cameron, Donna Sherman, Kathryn Kinde, Pat O'Neill, Lynn Lippert, Edward Lanthorn and Mrs. Gwen LaGoe.

Seniors To Present Play Friday, Saturday Evenings

Something quite unusual in the way of a Senior play is to be presented by the Senior class Nov. 18-19.

Rejecting the usual comical element, the class is presenting a more serious drama, "The Diary of Anne Frank."

The play takes place in Amsterdam, Holland during World War II and immediately thereafter. It is the story of a Jewish family seeking refuge from the Nazis in the attic of a warehouse.

Anne Frank, played by Carol Cameron, is a young girl who has an unusual understanding of many of the many joys and sorrows typical of youth.

The Franks share their attic refuge with Mr. and Mrs. Van Duan (Peter Flintoft and Linda Burghardt), and their son Peter, played by Ed Lanthorn. Peter and Anne become close friends and together they seek to find hope in their midlife world.

Margot, played by Carol Redde, is Anne's older sister. In contrast to the impetuous Anne, Margot is shy and quiet. She merely disappeared into his dressing room.

A couple of days later Jim Braddock announced his retirement with the cheers of his fans still ringing in his ears.

Car Stolen From Home Parking Lot

A car owned by Norma Hayes, employed at the Methodist home, was stolen from its parking place near the home, Wednesday evening, Nov. 9.

Another theft reported was that of a 2 1/2-horsepower chain saw at the Holloway Construction Co. field headquarters at M-92 and US-12.

Hunters Urged To Register with Conservation Dept.

Lansing—Hunters are offered a last-minute reminder that nearly all public lands are open to camping during Michigan's deer and bear hunting seasons.

There is no charge for camping in state and national forests. At state parks, the daily camping fee is \$1.00. An additional 25 cents is charged daily for electricity.

Camping information and camp registration cards are available at district and regional headquarters of the Conservation Department and from the state's 4,200 license dealers.

No fee is charged but hunters must post these cards at their camp sites. This helps Department field forces to locate hunters when home emergencies develop and also reduces litter problems.

Hunters who will not be camping are urged to register at these Department offices so they can be reached in case of emergency.

Anyone Want To Buy A Tank?

Lansing—Bulldozers and workmen at the State Highway Department are working on US-23 near Milan, recently unearthed a medium tank from a swamp where it has been buried for three years.

The tank was purchased from Camp Chaffee, Ark., in 1955 by a farmer to clear a wooded farm a mile east of Milan, where it became stuck in the mud and settled almost out of sight.

The farmer's widow has put the tank up for sale.

According to the 1960 American Library Directory, public libraries in the United States have 1,200 bookmobiles on the road today. North Carolina heads the list with 105, followed by Kentucky with 98, Ohio with 81. Michigan ranks eighth with 50.

MYSTERY FARM NO. 124 proved to be the Lindemann home at 3880 North Lima Center Rd., Dexter township. Originally published in the Nov. 10 issue of 'The Standard', it was first identified by the men at Black's Elevator Co.

Eugene Lindemanns Are Owners of 'Mystery Farm' on North Lima Center Rd.

Mr. and Mrs. Eugene Lindemann have been sole owners of "Mystery Farm No. 124" since they purchased the interest of the former owner, Reuben Lindemann, after his death. Eugene, his wife, and his brother, Reuben, had purchased it in 1929 from their father, Mrs. Emil Lindemann.

Mr. Lindemann died in 1927. His mother continued to make her home with the Eugene Lindemanns until her death, May 20, 1927. The Eugene Lindemanns on the farm at 3880 North Center Rd., since March 1918 still make their home there.

Eugene Lindemann is retired and Jay Hopkins of near Stockbridge rents the farm of 199.6 acres on which he does general farming.

The fine old farm home was built shortly after the Civil War, presumably by members of the Phelps family who were the original owners of the land. A new barn was erected in 1914 by the present owner's father, Emil Lindemann.

Emil Lindemann purchased the farm in 1900 from John Schaufele and lived there until his death in 1927.

He and his wife, the former Fredericka Kuebler, had a family of three sons and two daughters.

Eugene, the present owner, Elmer G. Lindemann of Chelsea, Reuben Lindemann of Dexter-Town Hall Rd., Mrs. Elsa Hoffman of Rives Junction, and the late Mrs. Mary Etta Binder.

The Eugene Lindemanns have one daughter, Joanne, now Mrs. Ernest Girbach of Saline, and four grandchildren.

Mr. and Mrs. Lindemann are members of the Masonic Lodge and the Order of Eastern Star in Dexter. Mrs. Lindemann was a leader of the original Busy Two-in-One 4-H club and is also a member of the Women's Society of Christian Service of the North-Lake Methodist church and a member of the North Lake Extension club.

The John Schaufele family who lived on the farm prior to 1900 had a son and daughter, Florence and Clarence.

Isaac Phelps is believed to have secured the farm land from the U. S. Government in the 1830's. In 1874, the owner is listed as Henry Phelps, probably a son of the original owner.

Very few people were able to correctly identify the Lindemann farm. In addition to the men at Black's Elevator Co., who have a record of almost 100 per cent correct identifications of the 124 farm photos already published, those who called The Standard office and identified the place include Mrs. Eugene Lindemann and Mr. and Mrs. Elmer Lindemann.

FURNACE DUST FILTERS

20x20x1 — 16x20x1
20x25x1 — 16x25x1

80c each

W. E. FARRELL SHEET METAL

INDUSTRIAL AND GENERAL SHEET METAL WORK

115 WEST MIDDLE STREET—CHELSEA

PHONE Greenwood 9-2011

OVER THE IRON CURTAIN... THE FIRST COMPLETE ALL-COLOR FILM REPORT "RUSSIA TODAY" RUSS POTTER'S FLIGHT TO THE SOVIET

An American's non-political report on the Russian people from Leningrad and Moscow to the Black Sea and the Caucasus. Very few Americans have been permitted to travel through the Soviet Union.



Russ Potter photographing in Red Square, Moscow.



The common people of Russia gather at the market place.

Narrated by RUSS POTTER in person!

The uncensored story of a 10,000-mile journey the length and breadth of the Soviet Union. Revealing... intimate... compelling...

— SPONSORED BY —

Chelsea Rod and Gun Club



RUSS POTTER

TICKETS NOW ON SALE

at

- ★ CHELSEA STATE BANK
- ★ CHELSEA DRUG
- ★ SCHATZ CIGAR STORE
- ★ MERKEL BROS.

or at the door

Adults: \$1.50

Students: \$1.00

Chelsea High School Auditorium — **MONDAY, NOV. 21**
BEGINNING AT 8:00 p. m.

Established 1871 **The Chelsea Standard** GR 5-3581 Telephone
General Excellence Award by Mich. Press Ass'n., 1951-1953-1954-1955
Walter P. Leonard—Editor and Publisher



Published every Thursday morning at 300 North Main Street, Chelsea, Mich., and entered as second class matter at the postoffice at Chelsea, Mich., under the act of March 3, 1879.

Subscription Rates (Payable in Advance):
In Michigan: One Year \$3.00 Six Months \$1.75 Single Copies \$.10
Outside Michigan: One Year \$4.00 Six Months \$2.25 Single Copies \$.10
Service men or women, anywhere, 1 year \$3.00
RETURN POSTAGE GUARANTEED

Time To Close Ranks with Everyone Working To Help U. S. Prosper

The presidential election of 1960 has ended in a Democratic party victory and the election of Senator John F. Kennedy to the Presidency of the United States.

Whatever the views of citizens prior to the election, the majority, regardless of how narrow a margin, has now spoken and it is time for the United States to close ranks in the great economic race with communism.

It is an awesome responsibility to assume leadership of the United States at this critical juncture in world affairs. The challenge from Russia and the communist world is the greatest ever presented our country.

Therefore, every citizen should pray that President-elect Kennedy is successful in his effort to get the country moving faster in the race to make the United States invulnerable to communism, and all-powerful in the scientific field.

The campaign was a grueling one. Many people had sincere convictions, on both sides. But differences of opinion are the foundation and strength of a democracy.

Those disappointed will have another chance four years hence. Those victorious will now have their chance to "get the country moving."

The primary task facing the new administration is to succeed in building a strong America, with strong allies, which can hold out the hope of democracy to the new and underdeveloped countries of the world—in preference to communism.

To do this we must be strong internally and fiscally sound. Our people must be united, not divided. Therefore, each of us now has the duty to put his shoulder to the wheel in an effort to build a greater and stronger republic.

Safe Hunting Rules - For Others . . .

The season for good hunting has begun. Unless 1960 is an exception to previous years, the newspapers will report numerous instances involving the wounding or killing of hunters by accident.

Despite the general realization that firearms are dangerous, human beings often take a chance, and by so doing, take the life of somebody else.

We have seen several collections of safety rules, designed to warn hunters of danger. The eleven rules set forth by the Conservation Department deserve wide circulation and study by all who plan to take to the woods in search of wild game.

(1) Never carry loaded guns in automobiles or other vehicles.

(2) When in the field, hunting birds, keep abreast of your companions.

(3) In loading, never point a gun in the direction of your companions.

(4) In climbing over stone walls or fences, first break or unfold your gun.

(5) A bird breaking to the right in the vicinity of your hunting companion should never be fired on by a hunter on the extreme left and vice versa.

(6) Never leave a loaded gun standing against a tree or lying on the ground where a dog may get at it.

(7) Always keep your gun pointed away from your companions when you stop to talk.

(8) In handing a gun to a person for inspection, be sure it is unloaded, don't just think it is.

(9) Never shoot in the direction of your companion because you consider yourself a good marksman. You will be taking a dangerous chance.

(10) Carry a gun pointed down to the left. If you shoot left-handed walk at the extreme right of the party.

(11) At all times, be careful.
Good hunting and good luck to all you lucky hunters!



**BANK AUTO
LOANS ARE
BEST!**

IT'S JUST GOOD HORSE SENSE to choose a car financing plan like ours that offers low cost, convenience and a bank contact for future borrowing.

3% NOW PAID ON ALL SAVINGS DEPOSITS

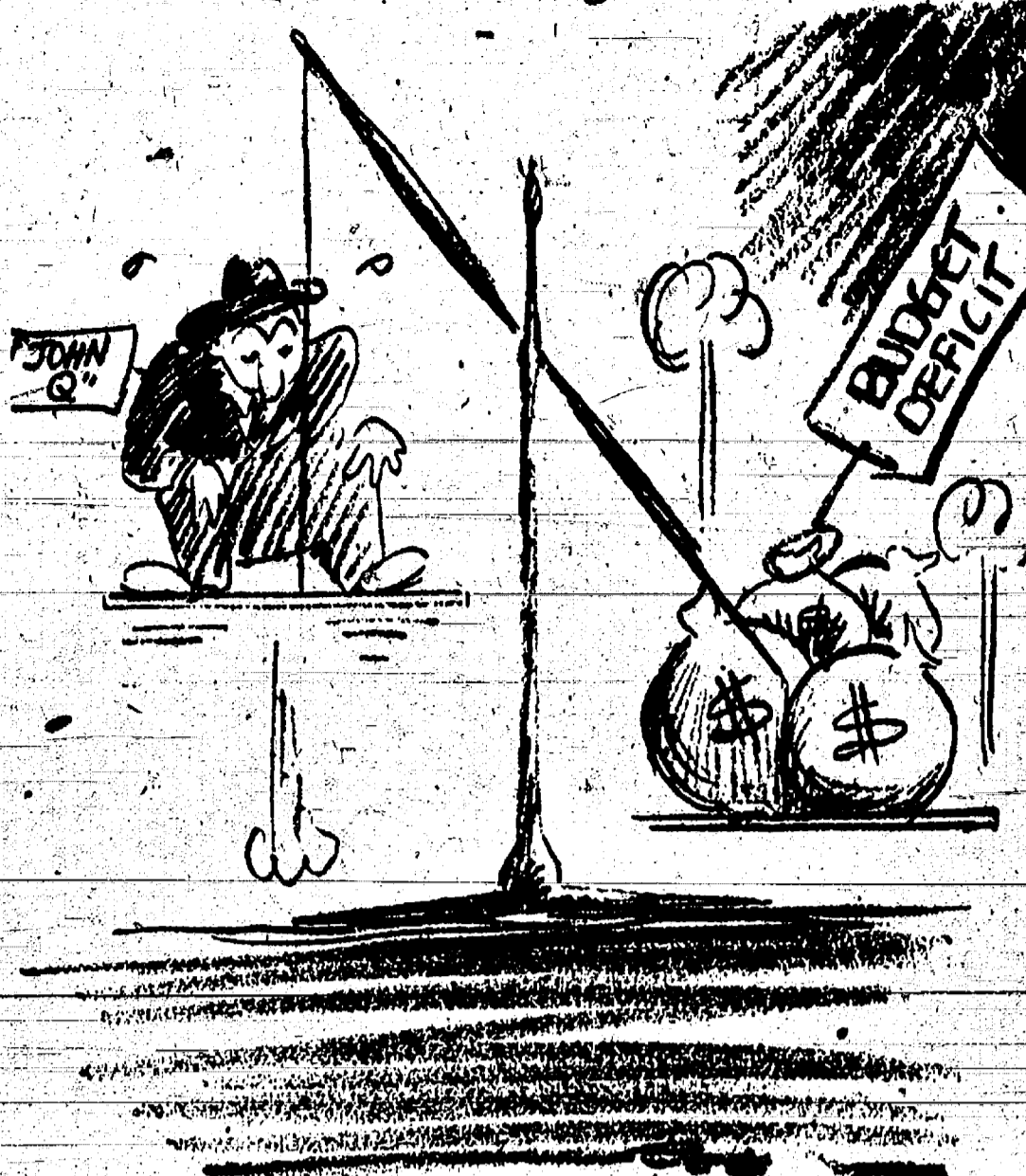
CHELSEA STATE BANK

Member Federal Reserve System



Member Federal Deposit Insurance Corp.

Goins. Going . . .



★ MICHIGAN MIRROR ★

By Elmer E. White, Secretary, Michigan Press Association

Michigan lawmakers may be asked next year to pass a bill to help police crack down on distributors of obscene literature, especially to youngsters.

The legislature, and its bill-drafting agency, the Legislative Service Bureau, may find they have a job on their hands in trying to write a bill that will control smut and still not infringe on the rights of newstand vendors or offend the literary world and those eager to guard rights of expression.

A committee of the Michigan House studying circulation of the obscene literature found it was more widespread than had been thought.

Postal officials told the committee, whose chairman is Rep. Harry A. DeMaso (R-Battle Creek), more than 70,000 complaints on smut were received by the Post Office department in the last year.

Groups from various communities told the committee, which has been holding a series of hearings on problems in their areas.

One well-meaning police officer suggested that the legislature pass a bill requiring that all newstand operators be licensed by the state. This, he reasoned, would give law enforcement officials something to hold over the heads of recalcitrant dealers in smut—namely, loss of their license to operate.

The trouble with approaching the problem from this angle is this:

Where do you draw the line between regulating undesirable practices of some operators and interfering with the legitimate circulation of the news and comment to which people are entitled?

Since the distribution point of obscene materials is obviously the easiest place to check it, lawmakers have a ticklish situation in trying to walk the narrow line between necessary regulation and unwarranted interference.

A system which aided the ancient Romans and was familiar to the American pioneers has come to modern Michigan.

Mail posts are being placed on super-highways which are part of the Interstate system. The Highway Department says the posts

At 8:30 a.m. on Monday before help travelers estimate their progress.

A bit of the heart of every news-

man in Michigan died with the passing of the Times.

On the following day, the voters in 82 of the 88 counties decreed by an overwhelming majority that they demand a change from the kind of government that has knocked Michigan into a tailspin.

Paul Bagwell, the Republican nominee for Governor, went down to the Wayne county line with a majority of 40,000.

This big Republican majority was not enough.

Once again, the UAW political machine demonstrated its amazing power in Detroit.

Bagwell's majority vanished and Swainson was elected Governor by a majority of 40,000.

By the narrow margin of one seat, the GOP recaptured control of the House of Representatives.

Republican control of the Senate never was questioned.

So Michigan will continue with all-elective administrative officials dominated by the UAW, and defiantly battling a legislative majority responsible only to the voters at home.

The next two years in Lansing may not be quite as hectic as the last two. Having broken the impasse in the House, Republicans will be able to kill all income tax bills being prepared by the union.

Approval of the four-cent sales tax amendment to the Constitution exonerated Republican Senators for their determined stand against an income tax in 1959.

But don't conclude that the UAW will surrender. Gov.-elect Swainson will go before the legislature in January with a record-breaking spending program.

By advocating more money for schools, for higher education, for hospitals, for welfare aid, for old age pensions, for medical care and other undertakings, Swainson will attempt to rally public support for a program that will cost more than all of the tax money now in sight.

He will try in vain to compromise on a "minor" income tax, hoping to force the door open for this kind of levy.

The anti-business climate will be continued by the administration. The UAW will tighten its hold on the courts, the educational system and on the administrative commissions.

And if a Constitutional Convention is approved by the voters at the election next April, the union

They also serve as reference points in case of emergency, the Department says.

The mile numbers, which have already been placed on green and white posts on one highway (the Detroit to Toledo freeway, I-75) from the Ohio line to the Monroe-Wayne county line, are the same on both sides of the highway.

This means the numbers will get smaller if a person is traveling south or east, and larger if the traveler is going west or north, the Department says.

Civil defense agencies to protect citizens and help get the state back on an even keel in the event of enemy attack or natural disaster are modernizing in an effort to keep up with the times and be ready in case they are needed.

The state Office of Civil Defense Mobilization (OCDM) will be reorganized next Jan. 1 under a plan approved by the federal government.

Essentially, the changes bring Michigan into line with recent federal innovations in OCDM program.

Four state agencies, the Office of Civil Defense, the Health Department, the Highway Department and the Department of Administration were slated to receive an additional \$101,510 in federal funds to help modernize their programs under the new plans.

The State Civil Defense Advisory Council, recently approved, measures to help state and local units institute these changes.

County, township and city Civil Defense agencies are faced with more radical changes in some cases to qualify for federal aid and to receive federal approval for their programs.

The advisory council approved a measure requiring state approval before local units could receive federal surplus property or matching funds.

One requirement making it difficult for some local units is that workers in a Civil Defense program must be under a merit employment system to qualify under certain parts of the federal program.

By FRANK C. MORRIS

Death of Times Is Blow to Newspapermen

paperman in Michigan died with the passing of the Times.

On the following day, the voters in 82 of the 88 counties decreed by an overwhelming majority that they demand a change from the kind of government that has knocked Michigan into a tailspin.

Paul Bagwell, the Republican nominee for Governor, went down to the Wayne county line with a majority of 40,000.

This big Republican majority was not enough.

Once again, the UAW political machine demonstrated its amazing power in Detroit.

Bagwell's majority vanished and Swainson was elected Governor by a majority of 40,000.

By the narrow margin of one seat, the GOP recaptured control of the House of Representatives.

Republican control of the Senate never was questioned.

So Michigan will continue with all-elective administrative officials dominated by the UAW, and defiantly battling a legislative majority responsible only to the voters at home.

The next two years in Lansing may not be quite as hectic as the last two. Having broken the impasse in the House, Republicans will be able to kill all income tax bills being prepared by the union.

Approval of the four-cent sales tax amendment to the Constitution exonerated Republican Senators for their determined stand against an income tax in 1959.

But don't conclude that the UAW will surrender. Gov.-elect Swainson will go before the legislature in January with a record-breaking spending program.

By advocating more money for schools, for higher education, for hospitals, for welfare aid, for old age pensions, for medical care and other undertakings, Swainson will attempt to rally public support for a program that will cost more than all of the tax money now in sight.

He will try in vain to compromise on a "minor" income tax, hoping to force the door open for this kind of levy.

The anti-business climate will be continued by the administration. The UAW will tighten its hold on the courts, the educational system and on the administrative commissions.

And if a Constitutional Convention is approved by the voters at the election next April, the union

Yours truly,
Uncle Lew.

Uncle Lew.

Flu Shots Will Prevent 7 of 10 Cases

Lansing—To have, or not to have flu shots?

That is a question thousands of persons ask themselves at this time every year, and it's a good question doctors at the state health department say.

In the fall and winter months of 1957-58 and again in the first three months of this year, the occurrence of epidemic influenza served to re-emphasize the fact that influenza is still a major contributing cause of death.

Studies made by the U.S. Public Health Service and the Michigan Department of Health reveal that thousands of flu-associated deaths might have been prevented through vaccination. The vast majority of the deaths occurred among high-risk groups, particularly the aged, the chronically ill, and the pregnant.

Therefore, Dr. Albert E. Heustis, state health commissioner, is urging persons in these high-risk groups to see their doctors about vaccination against the flu as soon as possible. The most vulnerable are people over 65 years old, pregnant women, and persons suffering from diseases of the heart, kidney, and lungs.

There is an opinion, and usually a valid one according to the commissioner, that sometimes the effects of flu shots can be almost as bad as having the disease itself. Since the flu virus from which the vaccine is made is grown in chick embryos, persons sensitive to eggs or egg products are advised by their physicians to skip the shots. Non-sensitive people normally will not experience reactions.

The vaccine now commercially available prevents about 7 out of 10 cases of flu, including the Asian strain. Two shots given two to four weeks apart provides protection for the current season only. New protection must be obtained each year.

U. S. & CANADA

Officials in Washington do not expect U. S. to re-establish diplomatic relations on the ambassadorial level with Cuba in the near future. Also, there are reports from U. S. representatives in Latin America which alarm the State Department.

They tell of a plan to attack the U. S. naval base in Cuba, said to have been carefully worked out by the Castro regime. The plan would make the incident appear to be one touched off by U. S. forces at the naval base.

Arizona is a leading mining state. Its principal mining products are copper, gold and silver.

24 Years Ago . . .

Thursday, Nov. 12, 1936—

The Rev. Fr. John Nagle, administrator of St. Mary's church the past six months, has been transferred to Kinde and the Rev. Fr. Lawrence Dorr of Belding has been appointed to the Chelsea pastorage, effective Nov. 20.

Under the direction of Miss Lucille Boongaard, director of music

at Chelsea High school, a quintet and a boys' quartet have been formed. Both groups are practicing for Christmas. The quintet: Peggy Blecker, Hart, Jeanne Luck, Schenk and Joan Walworth. The quartet: Harry Blecker, Brueckner, John Fletcher and Joy Prudden.

Sylvan Center school now only 25 pupils since six have moved out of the district—George, Walter and Buddy Freytag, Elenor and Erma Eisel.

34 Years Ago . . .

Thursday, Nov. 11, 1926—

Eleven sheep owned by Lawrence & Son of Chelsea the best record of merit ever in the state in tests conducted by the Michigan State College.

The Lawrence's have 10 ewes averaging 110 lbs. each. Michigan's record of last year was 100 lbs.

Six girls who have been canning club work under the leadership of Mrs. Vera Kalmann calling themselves the "Cold Pack Club" held an all-day home. More than 200 of fruit and vegetables were sold by the six members: Chad Hadley, Corrine Palmer, Helen and Mary Hadley and Stoffer.

Otto Licht, Arthur Finn, Stoffer and Lawton Schabbe this morning for Gladstone hunting trip and are making trip by automobile.

AIR CONTROL PLAN

The Federal Aviation Authority has a new plan for traffic over congested airport areas. The plan proposes that the control of these areas have absolute control over all aircraft in the area that a maximum speed of 150 mph be enforced.

The FAA fears that faster and greater congestion in these areas is increasing chances of air accidents.

JUST REMINISCING

Items Taken From the Files of The Chelsea Standard

4 Years Ago . . .

Thursday, Nov. 8, 1956—

Of the 2,600 registered voters in Sylvan township, 1,865 voted Tuesday when President Eisenhower was re-elected by the largest majority, nationally, that any presidential candidate has ever received.

Yorrie Bushler and Frederick Hoffman were inducted into the U. S. Army on Monday.

In the 14 Years Ago column (Nov. 11, 1942): Twenty-four years ago, on Nov. 11, 1918, residents of Chelsea put in a strenuous day celebrating the signing of the Armistice. It was the biggest day Chelsea ever had.

14 Years Ago . . .

Thursday, Nov. 7, 1946—

Funeral services were held Saturday for Miss Ella Barber, 79 years old, Chelsea Standard reporter for 20 years. She graduated from Chelsea High school in 1885 and was employed as bookkeeper and cashier at Vogel & Wurster department store from 1900 until 1941. She lived her entire lifetime in the house where she was born, 170 Park St., corner of East St.

Released from military service the past week: Cpl. Robert Preston; Sgt. Robert Steele; and Pvt. Roy Broesamle.

Announcement that Methodist Home will observe its 40th anniversary with an appropriate program and unveiling of a bronze statue, "Christ and One World," which was designed by an Ann Arbor woman, Mrs. Agnes McLean. The anniversary observance is scheduled for Nov. 12.

24 Years Ago . . .

Thursday, Nov. 12, 1936—

The Rev. Fr. John Nagle, administrator of St. Mary's church the past six months, has been transferred to Kinde and the Rev. Fr. Lawrence Dorr of Belding has been appointed to the Chelsea pastorage, effective Nov. 20.

Under the direction of Miss Lucille Boongaard, director of music

at Chelsea High school, a quintet and a boys' quartet have been formed. Both groups are practicing for Christmas. The quintet: Peggy Blecker, Hart, Jeanne Luck, Schenk and Joan Walworth. The quartet: Harry Blecker, Brueckner, John Fletcher and Joy Prudden.

Sylvan Center school now only 25 pupils since six have moved out of the district—George, Walter and Buddy Freytag, Elenor and Erma Eisel.

34 Years Ago . . .

Thursday, Nov. 11, 1926—

Eleven sheep owned by Lawrence & Son of Chelsea the best record of merit ever in the state in tests conducted by the Michigan State College.

The Lawrence's have 10 ewes averaging 110 lbs. each. Michigan's record of last year was 100 lbs.

Six girls who have been canning club work under the leadership of Mrs. Vera Kalmann calling themselves the "Cold Pack Club" held an all-day home. More than 200 of fruit and vegetables were sold by the six members: Chad Hadley, Corrine Palmer, Helen and Mary Hadley and Stoffer.

Otto Licht, Arthur Finn, Stoffer and Lawton Schabbe this morning for Gladstone hunting trip and are making trip by automobile.

AIR CONTROL PLAN

The Federal Aviation Authority has a new plan for traffic over congested airport areas. The plan proposes that the control of these areas have absolute control over all aircraft in the area that a maximum speed of 150 mph be enforced.

The FAA fears that faster and greater congestion in these areas is increasing chances of air accidents.

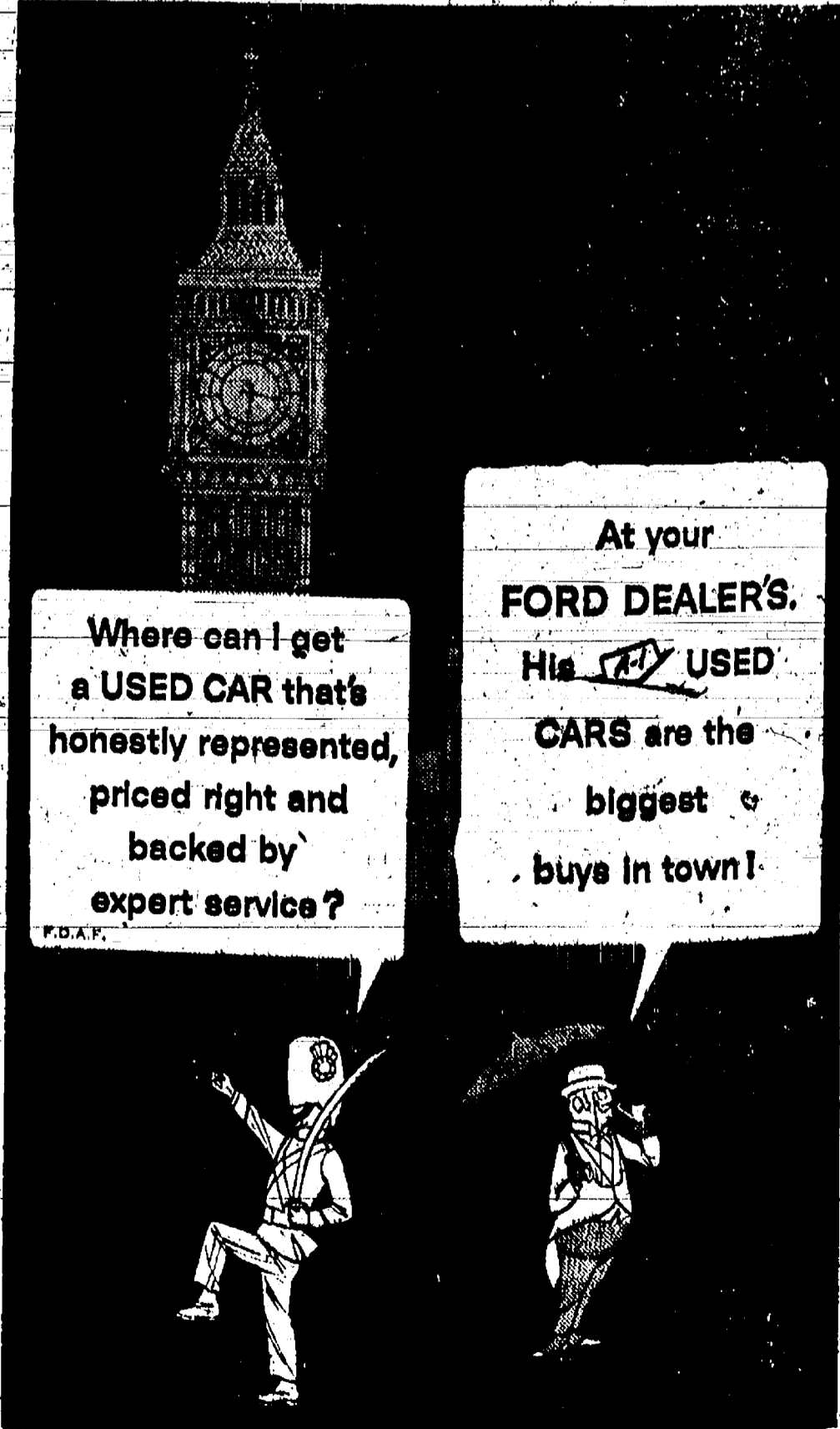
Thanksgiving Shopping List

It's time again to plan that Thanksgiving dinner and write out your shopping list so that you'll overlook nothing. Here's a suggestion:

FRESH FRUIT COCKTAIL	LETTUCE
TURKEY	WATERCRESS
CRANBERRIES	PUMPKIN
SWEET POTATOES	WHIPPING CREAM
FRESH LIMA BEANS	NUTS
PEARL OYSTERS	COFFEE

An interesting thing about this shopping list is that everything on it gets to your favorite shopping center by truck—and many of the items—out of season where you may live—come miles and miles to grace your happy table on Thanksgiving Day. As a matter of fact, everything you eat, wear, or use comes to you by truck—so thanks be to trucks for better living.

Michigan Trucking Association
Fort Shelby Hotel • Detroit



PALMER MOTOR SALES, INC.
CHELSEA, MICHIGAN

Services in Our Churches

ST. BARNABAS' EPISCOPAL CHURCH
118-12 Community Fairgrounds
Rev. Allan W. Reed, Vicar

Monday, Nov. 21—
7:00 p.m.—Discussion: "Church's Life," Group II.
Wednesday, Nov. 23—
4:00 p.m.—Junior choir rehearsal.
8:00 p.m.—United Thanksgiving service at the Methodist Home.

Thursday, Nov. 24—
9:00 a.m.—Thanksgiving Day service of Holy Communion.
Sunday, Nov. 27, worship services church school will begin the time schedule—10 a.m.

ST. PAUL'S EVANGELICAL AND REFORMED CHURCH
The Rev. Paul M. Schnake, Pastor

Thursday, Nov. 17—
1:30 p.m.—Fidelity Circle at the home of Betty Osterle.
7:30 p.m.—Junior choir rehearsal.
8:00 p.m.—Young Mothers Circle at the home of Mary Bauer.
8:30 p.m.—Senior choir rehearsal.

Sunday, Nov. 20—
8:15 a.m.—Early worship service.
9:30 a.m.—Sunday school.
10:45 a.m.—Regular worship service.

Women's Guild Thanksgiving gathering at both services.
8:00 p.m.—Kum Dubl club at the church.

Monday, Nov. 21—
7:30 p.m.—Sunday school teachers meeting.

Wednesday, Nov. 23—
8:00 p.m.—United Thanksgiving service at the Methodist Home chapel.

Items for the church paper are due Sunday, Nov. 20.

ZION LUTHERAN CHURCH
(Rogers Corners)
The Rev. C. J. Renner, Pastor

Thursday, Nov. 17—
8:00 p.m.—Men's shuffleboard.
Saturday, Nov. 19—
9:30 a.m.—Junior catechism class.
10:45 a.m.—Senior catechism class.

Sunday, Nov. 20—
9:15 a.m.—Sunday school.
10:30 a.m.—Worship service.
Sermon topic: "Redeeming the Time."

7:00 p.m.—Tri-County choir festival at Dundee High school.
Monday, Nov. 21—
7:00 p.m.—Junior choir rehearsal.
8:00 p.m.—Senior choir rehearsal.

Wednesday, Nov. 23—
7:30 p.m.—Thanksgiving service.
Thursday, Sept. 24—
7:30 p.m.—Luther League meeting in the parish hall.

ST. MARY'S CATHOLIC CHURCH
The Rev. Fr. Leo J. Smith, Pastor
Sunday, Nov. 20—
Masses at 7 a.m., 9 a.m., and 11 a.m.

NORTH LAKE METHODIST CHURCH
The Rev. Harry Pyscher, Pastor
Sunday, Nov. 20—
9:30 a.m.—Worship service.
10:30 a.m.—Sunday school.

SALEM GROVE METHODIST CHURCH
US-12 at Notten Road
The Rev. Harry Pyscher, Pastor
Sunday, Nov. 20—
10:00 a.m.—Sunday school.
11:15 a.m.—Worship service.

METHODIST HOME CHAPEL
The Rev. E. J. Weiss, Pastor
The Rev. G. P. Stanford, Chaplain
Sunday, Nov. 20—
8:00 a.m.—Worship service.
Wednesday, Nov. 23—
United Thanksgiving service.

Ann Arbor Girl Scouts Will Speak Monday Before Kiwanis Club

Three Ann Arbor girls who are members of the group known as Suzie Girl Scout speakers, will be guests of the Kiwanis club of Chelsea Monday evening, Nov. 21.

The three girls—Connie Bowler, Gerry Wrangler and Mary Jane Garlick—will speak on the following topics, respectively: The Scout Program; History and Purpose of Girl Scouting; and Local, National and International Program of Girl Scouting.

The Suzie Speakers group is an organization within the Girl Scouts which has for its purpose the development of public speaking. The girls welcome the opportunity to speak on subjects pertaining to

Girl Scouting before clubs and organizations.

Mrs. James Windell, Chelsea Girl Scout Neighborhood chairman, or Miss Kay Kimball of the Ann Arbor Girl Scout office, arrange speaking engagements for the girls in this area.

Miss Kimball who is Girl Scout district director, will accompany the three Ann Arbor girls to Monday's Kiwanis club meeting.

Senior Girl Scouts of Chelsea have been invited to the program in the social center of the Methodist church following the regular Kiwanis club dinner meeting.

Employment in insurance occupations totaled about 900,000 in 1958, 60 per cent. higher than in 1948, according to the U. S. Labor Department's Bureau of Labor Statistics.



Everything right
... ready to roll!

You know your car is RIGHT, when we check it out after any oil change or lube job.

Because we take particular care on every job, you can drive off without a care... confident of safe, smooth motoring.

PURE OIL PRODUCTS

HANKERD'S SERVICE

TIRES — BATTERIES — TUNE-UPS — BRAKE SERVICE
Phone GR 5-7411
Chelsea, Mich.

STANDARD ADS ARE A GOOD SHOPPING GUIDE

REGREATION CHURCH
The Rev. Philip Rusten, Pastor

Monday, Nov. 21—
8:00 p.m.—Youth choir rehearsal.
8:30 p.m.—Senior choir rehearsal.

Sunday, Nov. 20—
9:00 a.m.—Loyalty Sunday service and church school. Completion of member canvass. Pledges will be brought to service.

10:00 a.m.—Discussion of "Church's Life," Group I.

BETHEL EVANGELICAL AND REFORMED CHURCH
(United Church of Christ)
Freedom Township
The Rev. T. W. Menzel, Pastor

Thursday, Nov. 17—
4:15 p.m.—Junior choir rehearsal.
8:15 p.m.—Senior choir rehearsal.

Saturday, Nov. 19—
9:00 a.m.—Confirmation class.
Sunday, Nov. 20—
10:00 a.m.—Worship service.
11:00 a.m.—Sunday school.

FIRST METHODIST CHURCH
The Rev. S. D. Kinde, Pastor
Thursday, Nov. 17—
7:15 p.m.—Youth choir rehearsal.
8:00 p.m.—Senior choir rehearsal.

Saturday, Nov. 19—
10:30 a.m.—Junior choir rehearsal.

Sunday, Nov. 20—
10:00 a.m.—Nursery, kindergarten, primary and junior department church school classes.
10:00 a.m.—Worship service. Sacrament of Baptism.
11:00 a.m.—Fellowship coffee hour.

11:10 a.m.—Junior high, senior high and adult departments church school classes.
6:00 p.m.—Junior High MYF.
7:00 p.m.—Senior High MYF.

GREGORY BAPTIST CHURCH
The Rev. W. T. Cochran, Pastor
Sunday, Nov. 20—
10:00 a.m.—Morning worship.
11:15 a.m.—Sunday school.
4:45 p.m.—Training Union.
8:00 p.m.—Evening worship.

CHELSEA BAPTIST CHURCH
Wilkinson Street
The Rev. David A. Wood, Pastor
Sunday, Nov. 20—
10:00 a.m.—Sunday school.
11:00 a.m.—Worship service.
8:30 p.m.—Young people's service.

7:30 p.m.—Evening service, Wednesdays —
7:30 p.m.—Prayer meeting.

CHURCH OF CHRIST
M-92, 1/2 Mile South of Old US-12
Stanley Hudkins, Minister
Sunday, Nov. 20—
10:00 a.m.—Sunday school and Bible study.
11:00 a.m.—Morning worship.
8:00 p.m.—Evening worship service.

NORTH SHARON COMMUNITY BIBLE CHURCH
Sylvan and Washburn Roads
The Rev. Carmen Carpenter, Pastor
Sunday, Nov. 20—
10:00 a.m.—Sunday school.
11:00 a.m.—Worship service.
7:00 p.m.—Young people's meeting.
7:30 p.m.—Evening worship: Prayer meeting Wednesdays at 7:45 p.m.

UNADILLA PRESBYTERIAN CHURCH
The Rev. William Yauco, Pastor
Sunday, Nov. 20—
10:30 a.m.—Worship service.
11:30 a.m.—Sunday school.

WATERLOO VILLAGE CHURCH
(Evangelical United Brethren)
The Rev. Wilbur Silvernath, Pastor
Sunday, Nov. 20—
10:00 a.m.—Sunday school.
11:15 a.m.—Worship service.

About 400,000 non-farm wage or salary workers in December 1959 had a sideline business: or profession and close to 500,000 operated a farm, the U. S. Labor Department reported.

NOTICE

RAFTY PRODUCTS Upholstering Co.

announces their new location
425 N. MAIN ST.
GREGORY, MICH.

Temporary headquarters during construction of our new building, to be in my home at the same address.

Discounts up to 40% on rebuilding, reupholstering and reupholstering furniture.

SHORT DRIVE TO GREGORY
A BIG SAVINGS TO YOU!
Phone Alpine 6-2800

CLIP OUT AND PLACE NEAR YOUR TELEPHONE

Chelsea Fire Department GR 5-3451
Chelsea Police GR 5-4221
Sheriff NO 2-2504
Time NO 116

CHELSEA WEATHER DIAL*

NO. 5-8623

Sponsored by:

Chelsea Lumber Co. Chelsea Drug
Winans Jewelry Store Hankerd's Pure Oil Service
Gamble Store The Chelsea Standard
Palmer Motor Sales

(Patronize Your Weather Dial* Sponsors)

Registered U. S. Trademark

FIRST ASSEMBLY OF GOD CHURCH
1400 Old US-12
The Rev. James O. Sutton, Sr., Pastor

Saturday, Nov. 19—
7:30 p.m.—Christ Ambassadors area rally at this church.

Sunday, Nov. 20—
9:45 a.m.—Sunday School.
11:00 a.m.—Morning Worship service.
6:30 p.m.—Young people's meeting.

7:30 p.m.—Evangelistic service.

Wednesday, Nov. 23—
8:00 p.m.—United Thanksgiving service at the Methodist Home chapel.

Prayer meeting—Wednesdays at 10:30 a.m. and 7:30 p.m.
Bible study Thursdays at 10:30 a.m.

FIRST CHURCH OF CHRIST SCIENTIST
1883 Washtenaw Ave., Ann Arbor
Sunday, Nov. 20—
9:30 a.m.—Sunday school.
11:00 a.m.—Morning service.
Lesson-sermon: "Soul and Body."

ST. JOHN'S EVANGELICAL AND REFORMED CHURCH
(United Church of Christ)
The Rev. Donald H. Voss, Pastor (Rogers Corners)

Sunday, Nov. 20—
9:30 a.m.—Worship service.
10:30 a.m.—Sunday school.

ST. JOHN'S EVANGELICAL AND REFORMED CHURCH
(United Church of Christ) (Francisco)
The Rev. Donald H. Voss, Pastor
Sunday, Nov. 20—
9:45 a.m.—Sunday school.
11:00 a.m.—Worship service.

ST. THOMAS EVANGELICAL LUTHERAN
Freedom Township
Ellsworth and Haab Road
The Rev. Richard W. Bierlein
Sunday, Nov. 20—
10 a.m.—Worship service.
11 a.m.—Sunday school.

WHY TRUST YOUR LUCK?

When Dame Fortune smiles on you, wonderful. But what happens when misfortune overtakes you? The result can be a series of tragedies and losses that spoil financial ruin! Why trust your luck? Protect yourself against misfortune by investing wisely in good insurance.

PROTECT AGAINST MISFORTUNE, SEE YOUR LOCAL AGENT OR WRITE

HASTINGS MUTUAL Insurance Company HASTINGS, MICHIGAN

CELEBRATING OUR 75th ANNIVERSARY

BOTTLED and HEATING GAS SERVICE

FLAMEGAS SERVES AMERICA

★ SAFE
★ CLEAN
★ DEPENDABLE

Warden's Flamegas
4221 Cedar Lake Drive
Phone GR 9-5961

Flamegas Ypsilanti
5025 Carpenter Road (US-23)
Phone Ypsilanti MU 2-4522

TRANSIT-MIX CONCRETE

Finest quality concrete made to your specifications in our new automatic plant and delivered to your job location.

A fleet of 6 modern transit-mix trucks assures you of prompt delivery anywhere in the area.

PROMPT DELIVERY

STONES: 1 1/2", 1", 3/4", 1/2", 3/8" — 2NS SAND

KLUMPP BROS. GRAVEL CO.

Phone Chelsea GR 9-2712
4950 Loveland Road Grass Lake, Mich.



Before you buy any car, see COMET

Come in... now

...just **\$44.90*** a month

and a Comet sedan is yours!

- Still priced with or below compacts of other makers!
- Still first compact with fine-car styling—luxury touches everywhere!
- Still big-car comfort—small-car handling!
- Still outstanding mileage on regular gas—choice of two engines!
- Still more features... better ride... greater value!
- Now all models available for immediate delivery!

CHELSEA IMPLEMENT COMPANY, INC.
3231 Manchester Road
Chelsea, Michigan

*After down payment; includes heater and defroster; add state and local taxes where applicable. White sidewall tires optional at extra cost.

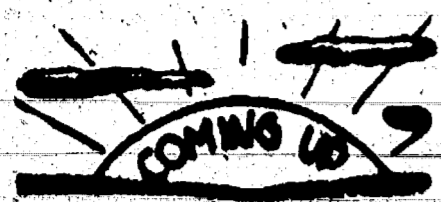
Legal Notices

1	2	3	4	5	6	7	8	9	10	11	12	13	14	15	16	17	18	19	20	21	22	23	24	25	26	27	28	29	30	31	32	33	34	35	36	37	38	39	40	41	42	43	44	45	46	47	48	49	50	51	52	53	54	55	56	57	58	59	60	61	62	63	64	65	66	67	68	69	70	71	72	73	74	75	76	77	78	79	80	81	82	83	84	85	86	87	88	89	90	91	92	93	94	95	96	97	98	99	100
1	2	3	4	5	6	7	8	9	10	11	12	13	14	15	16	17	18	19	20	21	22	23	24	25	26	27	28	29	30	31	32	33	34	35	36	37	38	39	40	41	42	43	44	45	46	47	48	49	50	51	52	53	54	55	56	57	58	59	60	61	62	63	64	65	66	67	68	69	70	71	72	73	74	75	76	77	78	79	80	81	82	83	84	85	86	87	88	89	90	91	92	93	94	95	96	97	98	99	100
1	2	3	4	5	6	7	8	9	10	11	12	13	14	15	16	17	18	19	20	21	22	23	24	25	26	27	28	29	30	31	32	33	34	35	36	37	38	39	40	41	42	43	44	45	46	47	48	49	50	51	52	53	54	55	56	57	58	59	60	61	62	63	64	65	66	67	68	69	70	71	72	73	74	75	76	77	78	79	80	81	82	83	84	85	86	87	88	89	90	91	92	93	94	95	96	97	98	99	100
1	2	3	4	5	6	7	8	9	10	11	12	13	14	15	16	17	18	19	20	21	22	23	24	25	26	27	28	29	30	31	32	33	34	35	36	37	38	39	40	41	42	43	44	45	46	47	48	49	50	51	52	53	54	55	56	57	58	59	60	61	62	63	64	65	66	67	68	69	70	71	72	73	74	75	76	77	78	79	80	81	82	83	84	85	86	87	88	89	90	91	92	93	94	95	96	97	98	99	100
1	2	3	4	5	6	7	8	9	10	11	12	13	14	15	16	17	18	19	20	21	22	23	24	25	26	27	28	29	30	31	32	33	34	35	36	37	38	39	40	41	42	43	44	45	46	47	48	49	50	51	52	53	54	55	56	57	58	59	60	61	62	63	64	65	66	67	68	69	70	71	72	73	74	75	76	77	78	79	80	81	82	83	84	85	86	87	88	89	90	91	92	93	94	95	96	97	98	99	100
1	2	3	4	5	6	7	8	9	10	11	12	13	14	15	16	17	18	19	20	21	22	23	24	25	26	27	28	29	30	31	32	33	34	35	36	37	38	39	40	41	42	43	44	45	46	47	48	49	50	51	52	53	54	55	56	57	58	59	60	61	62	63	64	65	66	67	68	69	70	71	72	73	74	75	76	77	78	79	80	81	82	83	84	85	86	87	8												

The Hi-Light

Edited by Students of the Chelsea High School Journalism Club

Co-Editors
Barbara Irwin - Nancy McCalla



Nov. 16-PTA meets in high school cafeteria.

Nov. 18-19-Senior play: "The Diary of Anne Frank."

Nov. 21-Assembly on Russia. 25 cents admission.

Chemistry students are diligently exploring the atomic theory. Tiny protons, neutrons, and electrons have become large problems. Orbitals, sub-shells, and valence are words that have become part of the chemistry students' vocabulary. If one should see a student's head circling round and round, he is only tracing the path of an electron.

Girls Athletic Association members plan a Fun Night for Nov. 14 at 7 o'clock. Unofficial rumors of a scavenger hunt were confirmed. Mrs. Finch plus the pres-

ent officers are working on a more efficient point system.

The Bulldog Marching Band and its director are very pleased with the season's accomplishments. The band had worked hard to be able to give the fine half-time shows. Many compliments were given the band and maorettes who did an outstanding job at each game.

The band was pleased by the compliments received from coaches and cheerleaders, who told them, "You give all the pep in the pep meetings!" They were also happy to have a few newcomers join the band. Mary Alban and Pat Mepys joined the drum section and Donna Schiller joined the clarinet section.

The concert band is working hard for future events. They are having tryouts for chair positions present. Lynn Fahrner switched from French horn to baritone for the concert season.

Members of speech classes are presently preparing for debate season reports Mrs. Sharp, instructor. Chelsea debaters will meet Stockbridge first. Recently eight students attended a debate clinic where University of Michigan pro-

cessors, authorities in their own field, addressed the various aspects of the United Nations. Then a group of University students gave a demonstration debate on the year's debate topic, "Resolved: that the United Nations should be significantly strengthened." As a whole, the class is progressing favorably.

Camera club is divided into two groups, with beginners headed by Mr. George Fanning and Mr. Thomas Slater. They are learning the basic operation of the camera. The second group, advised by Mr. William Hunter, is learning how to develop and print pictures. The club plans to photograph Christmas cards and to take pictures of the prom.

Latin club has just completed a very successful sale of taffy. The sale went especially well when salesmen were allowed to keep one-half the profit from the sale of each box beyond the eighth sold, as an extra incentive for quick sale. Dru Pickelsimer sold the most boxes with Megs Ritter coming in second and Barb Wenk third.

The members decided to give \$10 to CROP and \$10 to "Feed a Family." A swimming party and dance were also discussed.

Both Varsity and Junior Varsity cheerleaders are working energetically on cheers for the coming basketball season. They are looking forward to the new season and hope that the excellent school spirit continues.

The JV's are purchasing new uniforms. The Athletic Board is paying for new gold sweaters, while the girls themselves will buy navy blue skirts or culottes.

Two more students have enrolled in CHS. Mark Steger, Junior, returns from a brief stay at Staunton Military School in Virginia.

Also new is Kenneth Balch from Whitmore Lake. CHS welcomes both.

Leaving CHS are Gordon Carpenter, popular freshman and important point man on the JV football team, who recently moved to Stockbridge, and Glenn Hayes, who joined the Marines, and is now at San Diego, Calif.

Ed Brown doesn't have enough responsibilities as things are; he has taken on an "office practice" class. Ed has assumed the responsibility of teaching several Journalism club members how to operate the mimeograph. Sandy Sharrard, Patty Pastor, Rose Ann Hiltz, Rayma Smith, and Elaine Pearson hope to be able to "run off" the Bulldog Barks next year. Until now, sole operators of the tricky machine have been Jill Barkley, Kay Runelman, and Ed Brown.

Chorus is struggling to prepare for a concert Dec. 8, a trip to the Methodist home on Dec. 8, and is trying to book an exchange concert with another school.

Mrs. Gwen LaGoe's senior English class has been reading Shakespeare's "Macbeth" for the past fortnight. Each student is required to write an essay dealing with the characters and conflicts of the play. Once the class listened to a recording of the drama and enjoyed it greatly. Many students plan to watch the forthcoming television presentation of the age-old favorite.

Sophomores had a big program Friday night. The traditional sophomore-freshman dance was highlighted by a Russian dance performed by Dot DeFanti, Dot Martin, Leslie Baxter, and Cecann McCarthy. A skit called "Ladies of the Mop," a hilarious comedy, was done by Carol McCalla, Nancy Fairbrother, Loretta Wahl, and Dru Pickelsimer. Another high point was a beatnik skit by Dave Young, Margot Murphy, Bill Allen, Bob Riemenschneider, Judy Weinlauf, Sandy Sharrard, Gary Ferry, and Tom Eisenbeler. Tim Whittall displayed his talents by playing the accordion. Mrs. Lester, a Junior High teacher, sang folk songs and played the guitar. The entertainment was brought to a thrilling conclusion by the guitar playing of Mr. William Hunter. He and his accompanist, Virginia LeVan, graced the stage with folk songs. Needless to say, there was dancing.

The annual football banquet, honoring both varsity and junior varsity teams, was held Tuesday. The players' mothers graciously agreed to plan and serve the meal.

Among those present were the coaches and their wives, cheerleaders, and other honored guests. The co-captains for the 1961 season were announced, the most improved and valuable linemen and backs were also announced. Speeches from the team members and coaches followed the dinner.

Junior High Student Council meets frequently with President Tom Sharrard presiding. The group planned the Welcome Dance held Nov. 11. Committees were chosen and the party plan was approved. The dance was named "Fall Rally," and refreshments were cider and doughnuts.

Vice-president Grace Kushnau has given several reports on money for a Christmas program. The plans of course are secret.

The Council has just purchased ten new dance records for new dances and monthly evening dances. Treasurer Jennifer Bolton, appointed by officers and advisors, has been doing a good job of keeping the books in order. Advisor Mr. Bussler has just ordered a portable record player for the school as a gift from the Council. Officers: Tom Sharrard, Grace Kushnau, Linda Wahl (secretary) and Jennifer Bolton meet to decide the agenda for the hour-long meetings, which occur each Tuesday, on rotating hours.

Eighth grade science class this year has been experimenting with animals such as hamsters, rats, and mice. The class let them mate and watched to see how much of parental appearance each baby inherited. When they were old enough, the class put them through a maze to find how long it would take the animals to learn to go through without error, with accurate time records for each trip to form a rough measure of the animal's intelligence. People who were interested in this sort of work bought "shares" in the animals.

Now Mr. Hoffmeyer's class can say they have had some experience with these animals.

Seventh and eighth graders participated in a mock election at Junior High School. Speeches were held in history class. Tom Sharrard was Senator Kennedy, and George Gary was Vice-President Nixon. Nixon got 171 votes and Kennedy got 77.

Junior High cheerleaders were chosen at the beginning of the year. They are Linda Meehan, Debbie Miller, Audrey Hayes, Kris Kayser, Sandy Olsch, Louise Battarazi, and subcaptains, Luna Faust. The girls decided on blue skirts, blue sweaters and yellow "C's" for their uniforms. The cheerleaders have cheered at two football games and are now getting ready for the basketball season.

Boys' choir meets on Tuesdays and Thursdays, and has select choir on Fridays. They are learning some new songs for the Christmas concert to be given Dec. 10 at the High School auditorium. Some songs will be sung in foreign words. They are "What Light is That," "Twelve O'Clock is Striking Now," and "Peace to All." Other songs will be "O Come, All Ye Faithful," and "Silent Night." Progress is being made slowly but surely, and the boys are expected to do a fine job on the concert night.

SOVIET PROGRESS
Washington sources report that Russia is closer to success in the race to obtain a workable missile killer than is the United States. Sources say the Russians are very close to the date when they will have a workable anti-missile missile in operation throughout the country.

Estimates are that the U. S. anti-missile missile will be several years in the perfecting stage before it reaches the hands of defense units throughout the United States.

SUBSCRIBE TODAY
TO THE CHELSEA STANDARD!

We make warm friends with clean, pure, low cost
GULF GASOLINE
L.P. GASOLINE
Prompt, regular courteous service from
GALLUP-SILK WORTH CO., INC.
Phone NO 5-6161
2141 So. State Street Ann Arbor



Give them a steady diet of our famous enriched feeds and see how healthy they stay... how they thrive!

FARMERS' SUPPLY CO.
ANTON NIELSEN - SEEDS, FEEDS, FERTILIZER
DAIRY AND POULTRY EQUIPMENT
ACROSS FROM DEPOT - PHONE GR 8-8511 CHELSEA

Oceans of Gasoline

Lansing—The U. S. Bureau of Public Roads reports Americans will burn nearly 64 billion gallons of motor fuel this year, most of it gasoline.

The report said the average Michigan resident will use 776 gallons of gasoline this year which will cost him about \$250 of which \$77 will be taxes—six cents for each gallon to the state and four cents to the federal government.

Thus, the typical Michigan resident will contribute \$46.20 to the roads and streets in Michigan this year.

The combined assets of the American farmers, according to Federal statistics, is 111 billion dollars. Before the last war they were 54 billion.

A study in December of last year showed that 6.8 per cent of the employed men and 2.0 per cent of the employed women held more than one job, the U. S. Labor Department's Bureau of Labor Statistics reported.

FARMERS
FOR TOP PRICES
FOR YOUR LIVESTOCK
Consign to the
Howell Livestock Auction

We have buyers for all kinds of livestock. Sale every Monday at 2 p.m.
Phone 1089 Howell
For Any Information

If You Plan To Build or Remodel Your Home
Call Us for...
FREE ESTIMATES OR BIDS
— on —
PLUMBING, WIRING and HEATING
All Work Guaranteed with 1 Year Free Service.
WE SELL FOR LESS - WE WILL SAVE YOU MONEY!
Hours: Daily, 8-5:30; Friday, 8 a.m. to 8 p.m.
EMERGENCY SERVICE CALLS: GR 5-8175

HILLTOP PLUMBING, HEATING & ELECTRICAL CONTRACTORS
201 SOUTH MAIN STREET
Chelsea, Mich.
Phone GR 5-7201

Gambles
The Friendly Store

TERRIFIC VALUE!

Suite Cushioned in Luxury Foam

\$17.95 DOWN EASY TERMS

2.15 Per Week, Payable Monthly

Reversible Cushions

Contemporary Suite - New Slant Arm Styling

SEE THIS SUITE TODAY!

You get a lot to like at an amazingly low price in this lovely 2-pc. suite! New 1961 styling features graceful slanting arms, smart button and welt trim. Reversible foam cushions retain their shape for years. Textured frieze cover in beige.

Swivel Rocker

Our Low Price **59.95** 1.25 Per Week

Pay Only \$5 Down

Our Big All-Time Rocker Buy

LOOKS LIKE LEATHER! FEELS LIKE LEATHER!

Antique Moroccan grain Plastic

SADDLE BROWN OR OXFORD

4 1/2" Foam Reversible T-Cushion

MOLDED FOAM REVERSIBLE T-CUSHION

Dad will love the honest-to-goodness comfort of this luxury rocker with high, wide, tufted back. Boasts foam rubber headrest, padded arms. Adjustable 360° full-swivel on smooth action nylon bearings. Nylon-Viscose cover—3 colors! \$29.95

1960 Version of Gambles All Time Best Seller!

Only 3.95 Down on Easy Terms

39.95 1.25 Per Week Payable Monthly

Here's our best selling swivel-rocker with all new, 1960 improvements! It's higher, wider—features the durable Chromspan metallic tweed cover in red, beige, black, turquoise, green or black with harmonizing plastic, 2 rich wood finishes—walnut or stained oak.

CHILD'S SET
Rocker 7.95
Sofa 12.95
1/2 adult size Bright red, washable rocker and sofa with toy storage! \$20.95, 20% off

MR. MACHINE
988
TV walking robot with built-in silent fun to take apart and assemble. \$21.95

RUTHIE DOLL
799
Reg. 10.95! She will sleep, has cooed and wears like T-cushion! \$21.95

SAF-T-SAW
344
Kids love to cut out stylized foam toy safe jig-saw (uses batteries) and kit! \$20.95

BOWLING SET
677
Big 9 1/2" pins reset automatically! Ten pins, 2 bowling balls. \$21.95

RACE TRACK
799
Hold your own road race! 2 races, separate controls, 2 x 4 ft. track! \$21.95

LAY-AWAY NOW FOR CHRISTMAS

Gambles Fine Furniture on Easy Terms - Only 10% Down!



INSULATION SAVES YOU MONEY

Right now is the time to plan for your comfort through the cold winter months ahead. See us today for an estimate on insulating your home. Savings in fuel costs will pay for the complete job before you realize it.

CLOSED WEEK OF NOV. 14-19

Open - 7:30 a.m. to 5:30 p.m.

Finkbeiner Lumber Co.

Phone GR 9-3881

QUALITY MATERIALS AND SERVICE

On Old US-12 Just off S. Main St.

MARTIN STEINBACH, OWNER

AS TOUGH AS THE TEAM

SHOCK-PROOFED WATER-PROOFED LUMINOUS DIAL JEWEL

ELGIN WATCHES FOR \$29.95

DRIFTWOOD Styled for the man of action. Water-proofed. Shock-proofed.

OCEANIC Rugged, shock-proofed, water-proofed. Handsome, luminous dial.

BISMARCK A real man's watch of fine Elgin quality. Expertly built to "take-it."

*When case, crystal and crown are tested. Fed. Test. included.

Winans Jewelry Store